

Mila

HANDMADE SCRIPT & SANS



THE MILA SCRIPT PRO FAMILY: KEEP THE LINE-WEIGHTS EQUAL

Mila

SCRIPT PRO

&

Mila

SCRIPT BASIC

MILA SCRIPT SANS

MILA SCRIPT SANS LIGHT

MILA SCRIPT SANS REGULAR

MILA SCRIPT SANS BOLD

888

MILA SCRIPT ORNAMENTS

888



Mila @ Mila

SCRIPT PRO

SCRIPT BASIC



→ 6

THE BOLD

THE REGULAR

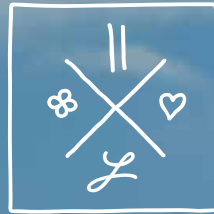
AND THE LIGHT

PLEASE LOOK CLOSELY

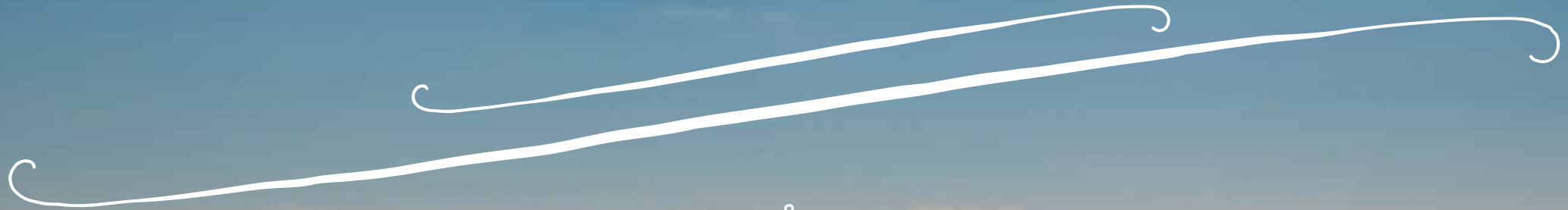
MILA SCRIPT SANS

→ 63

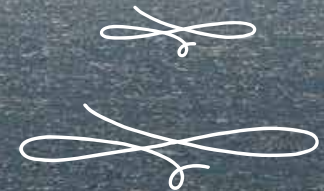




CHANGE



→ 73



MILA SCRIPT
ORNAMENTS

THE LINE-WEIGHT



Introducing

Mila Script Pro & Basic



Typesetting is made easy with
Mila Script Pro & Basic.

AutomaticSwashControl is installed
within its main features OpenType
CONTEXTUAL ALTERNATES, SWASHES
and TITLING ALTERNATES. Switch one
on and let Mila Script do the rest.

Of course there's a little more know
about Mila Script Pro. For a deep
inside view, please check out
this manual. 2600+ characters
offer four different initial styles,
capital swash and titling alternates,
connected words, 17 different
initial and terminal swashes and
much more. All of course with full
iso latin 1 & 2 language support.

Mila Script Basic offers all features
contained in OpenType CONTEXTUAL
ALTERNATES.



Introducing

Mila Script Pro



STYLISTIC SET 04

Standard

a

a

a

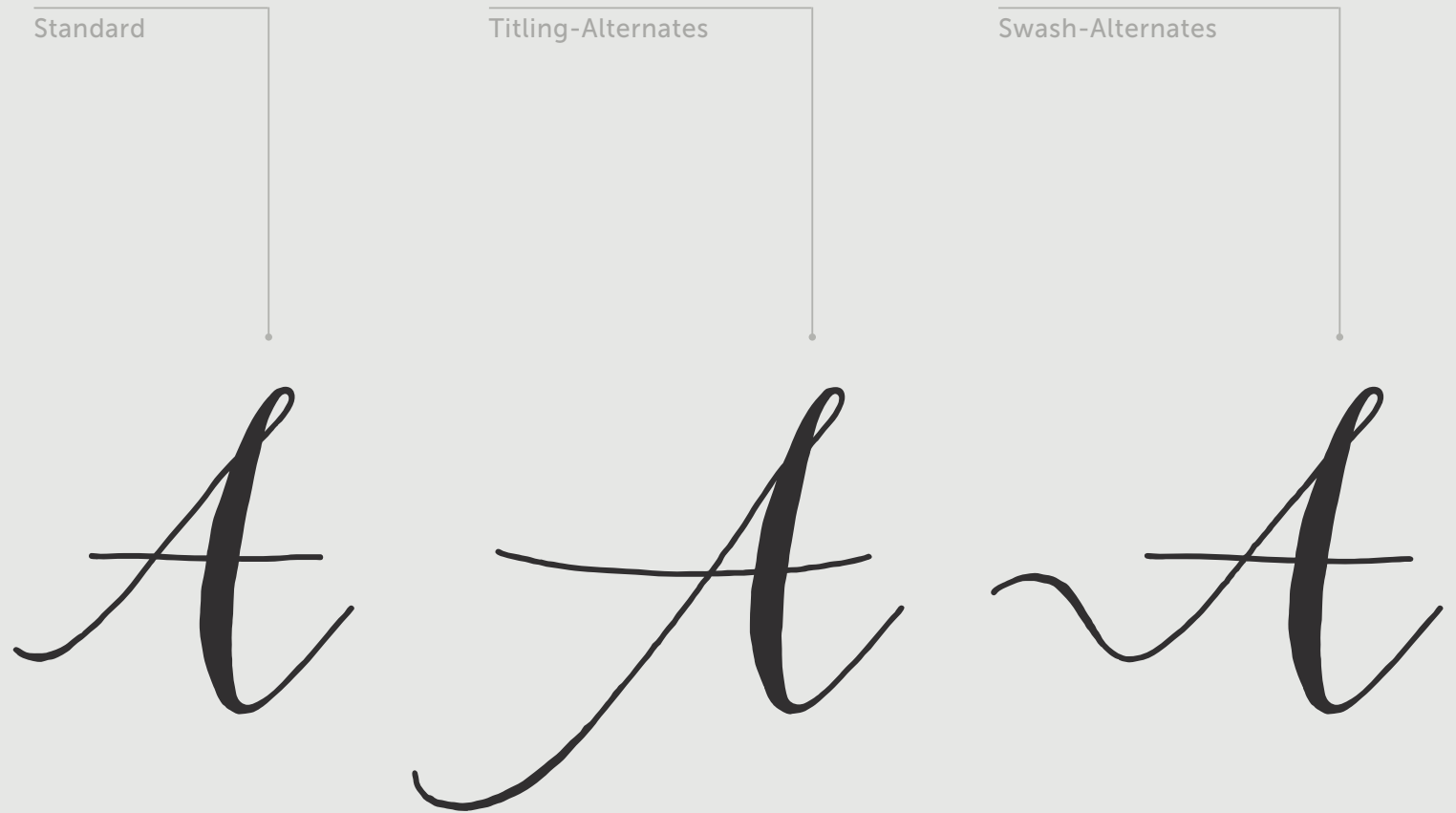
Contextual Alternates

FOUR DIFFERENT LOWER CASE INITIALS

a

Swash & Titling Alternates

Introducing
Mila Script Pro
✿



THREE DIFFERENT CAPITAL ALTERNATES

Introducing

Mila Script Pro & Basic



i Multilingual!

MILA SCRIPT PRO INCLUDES 2681 CHARACTERS

Introducing

Mila Script Pro & Basic



OPENTYPE-features: page 17

SMART OPENTYPE FEATURES PROVIDE STYLE AT THE PUSH OF A BUTTON!

AUTOMATIC

swash

CONTROL



Introducing

Mila Script Pro & Basic



CONTEXTUAL ALTERNATES: page 18

closely

CONNECTING AND NON-CONNECTING LETTERFORMS

Introducing

Mila Script Pro & Basic



CONTEXTUAL ALTERNATES: page 18

me@mac

CONNECTING @ AND &

Initials without beginning
stroke: page 50

the
analog
camera
club

ALTERNATE
BEGINNINGS

17 different initial and terminal
swashes: page 29



INITIAL AND TERMINAL SWASHES

a

a

a

a

a

a

a

a

Linked words: page 31

once
upon a time
CONNECT WORDS WITH A CLICK



Austrian
woods.

STYLISTIC SETS PROVIDE ALTERNATIVE CHARACTERS

OPENTYPE STYLISTIC SETS: page 46



OPENTYPE *Features.*

CONTEXTUAL ALTERNATES

DISCRETIONARY LIGATURES

STYLISTIC ALTERNATES

TITLING ALTERNATES

POSITIONAL FORMS

STYLISTIC SETS

SWASHES



CONTEXTUAL ALTERNATES

OpenType Features

Mila Script Pro & Basic



CONTEXTUAL ALTERNATES combines many single features. Turn it on and everything works by itself.

It provides the most legible and balanced style within Mila Script. It's a good choice for larger amounts of text as well as single word typesetting. Take it as your basis for further OT-options.

CONTEXTUAL ALTERNATES is on per default in most applications and combinable with all other OT-FEATURES.

OPENTYPE

Contextual
Alternates

CONTEXTUAL ALTERNATES

OpenType Features

Mila Script Pro & Basic



AutomaticSwashControl

CONTEXTUAL ALTERNATES includes subtle contextual swash alternates, all substitutions work automatically.

Swash alternates are provided for:

|b|d|f|g|h|k|l|p|s|t|

Allow characters
that match
one another
to be inserted
automatically.

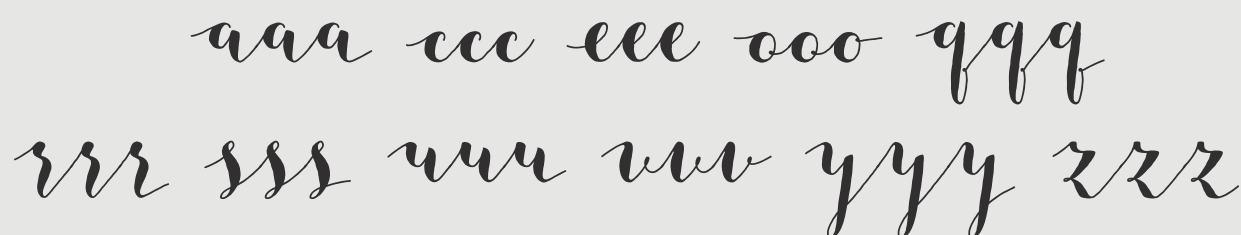
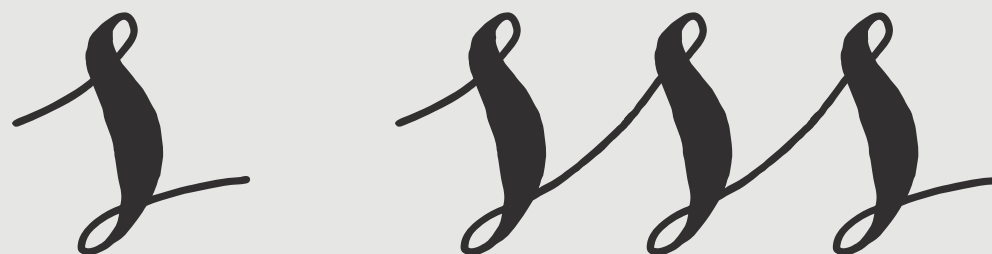


Lowercase isolated-, initial-, medial- and terminal-forms

There's no need to activate

POSITIONAL FORMS, CONTEXTUAL

ALTERNATES does it all.





Double letter ligatures

There's only one, the tt-ligature :)

CONTEXTUAL ALTERNATES adjusts the stroke length to the available white space.

DOUBLE
letter

LIGATURES

tt tt tt tt

CONTEXTUAL ALTERNATES

OpenType Features

Mila Script Pro & Basic



Connecting and non-connecting lowercase characters

Mila Script provides both styles
for many lowercase characters and
CONTEXTUAL ALTERNATES does the
switch automatically.

Daily mail

l a l d d l e l g l o l q l r

non-connecting alternates

t a t c t d t e t g t o t q t r

connecting alternates

CONTEXTUAL ALTERNATES

OpenType Features

Mila Script Pro & Basic



Connecting & and @

CONTEXTUAL ALTERNATES even
provides a connecting & and @.

medyou@mail

me & you @ mail.com

non-connecting & and @ alternates

SWASHES

OpenType Features

Mila Script Pro



The SWASHES feature is very powerful. Turn it on and nearly everything works by itself.

All features described in CONTEXTUAL ALTERNATES are included, but the outcome is different (e.g. longer swashes and swash initials).

On top of that, SWASHES offers some extra possibilities!

SWASHES is combinable with all other OT-FEATURES.

Your application doesn't support
SWASHES? Choose STYLISTIC SET 01!

OPENTYPE
Swashes

SWASHES

OpenType Features

Mila Script Pro



Lowercase swash alternates

SWASHES provides swashy isolated-, initial- and terminal-forms.

There's no need to activate POSITIONAL FORMS, SWASHES does it all.



initial- and terminal swash alternates



Swash capitals

Mila Script Pro provides swashy versions for all capital letters.



A large, elegant swash capital letter 'A' in a cursive script. It features a horizontal line through the middle of the letter. Below the letter, there are two short, parallel horizontal lines.



A row of swash capital letters from A to X, displayed in a cursive script. The letters are: A, B, C, D, E, F, G, H, I, J, K, L, M, N, O, P, Q, R, S, T, U, V, W, X.

some swash capitals

SWASHES

OpenType Features

Mila Script Pro



AutomaticSwashControl

Compared to CONTEXTUAL
ALTERNATES, the swashes grow
longer now.

All swashes adjust themselves to
the available white space.

Contextual swash characters
are provided for:

| b | d | f | g | h | k | l | p | s | t |

end of
Season.

SWASHES

OpenType Features

Mila Script Pro



AutomaticSwashControl

Compared to CONTEXTUAL
ALTERNATES, the swashes grow
longer now.

All swashes adjust themselves to
the available white space.

Contextual swash characters
are provided for:

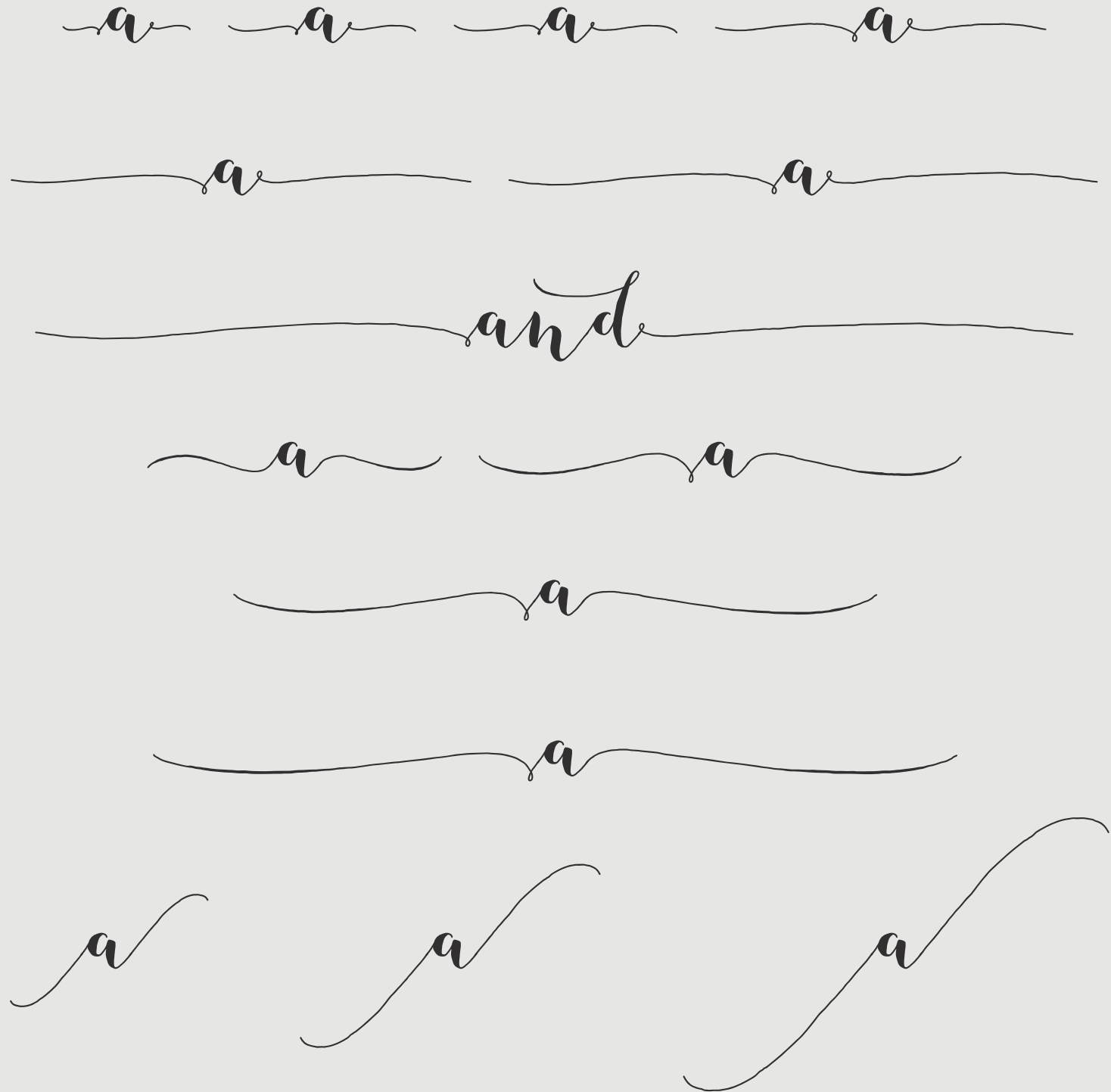
| b | d | f | g | h | k | l | p | s | t |

see
fresh emotion
classic season
first closely
moods consider
create and
goldsmith
used

SWASHES

OpenType Features

Mila Script Pro



Initial and terminal swashes

Besides swash initial alternates, Mila Script Pro provides 17 extra swashes for even more outstanding beginnings and endings.

To be explained in detail on the following pages ...

SWASHES

OpenType Features

Mila Script Pro



Initial and terminal swashes

Start with ++ before or after any lowercase letter, & or @.

Add + to change the shape according to your likings and choose from 17 different styles!



++ a ++



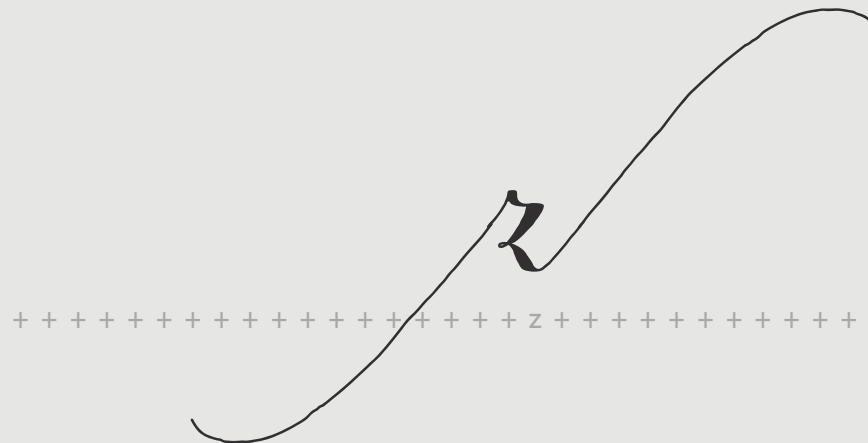
++++++ r ++++++



++++++ & ++++++



++++++ @ ++++++



++++++ Z ++++++

SWASHES

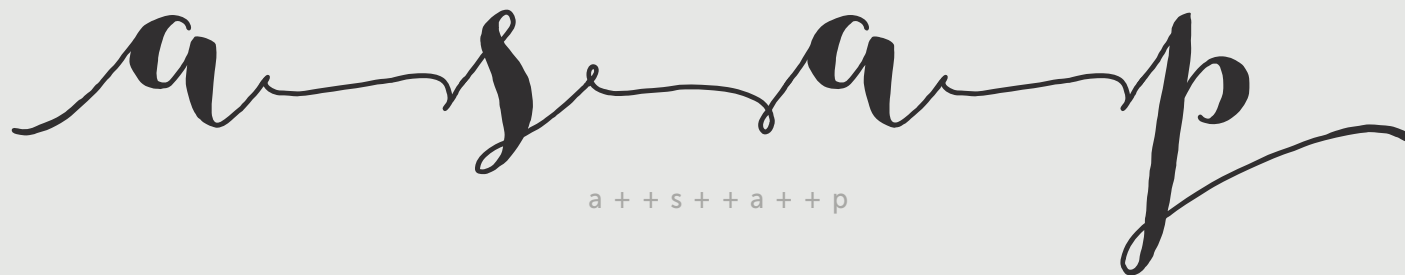
OpenType Features

Mila Script Pro



Linked words

With SWASHES, you may even
connect words to each other.



SWASHES

OpenType Features

Mila Script Pro



Linked words

Start with ++ between two lowercase letters, & or @.

Add + and choose from nine different lengths.



i n + + a n d + + o u t

SWASHES

OpenType Features

Mila Script Pro



Extra swashes & Linked words

Combine LINKED WORDS and EXTRA
INITIAL AND TERMINAL SWASHES for
impressive and unique designs.

safe and sound

++++++safe++and++sound++++++

TITLING ALTERNATES

OpenType Features

Mila Script Pro



TITLING-ALTERNATES and SWASHES are similar in its feature range, TITLING-ALTERNATES just does it a little larger.

TITLING-ALTERNATES is combinable with all other OT-FEATURES.

Your application doesn't support
TITLING ALTERNATES? Please choose
STYLISTIC SET 02.

OPENTYPE *Titling*
Alternates

TITLING ALTERNATES

OpenType Features

Mila Script Pro



AutomaticSwashControl

TITLING ALTERNATES provides even longer swashes, exceeding word boundaries.

tiger

TITLING-ALTERNATES

+++++++tiger++++++

tiger

SWASHES

TITLING ALTERNATES

OpenType Features

Mila Script Pro



AutomaticSwashControl

TITLING ALTERNATES provides even longer swashes, exceeding word boundaries.

To extend swashes at word beginnings or endings, simply add blanks.

display moods

TITLING-ALTERNATES

{space}{space}{space}{space}display moods{space}{space}{space}{space}

display moods

SWASHES



Titling capitals

Besides standard and swashy versions for all capital letters, Mila Script Pro provides extra titling capitals.





Control the t- and tt-stroke-lengths
with DISCRETIONARY LIGATURES.

OPENTYPE

Discretionary Ligatures



Customized t- and tt-swashes

With SWASHES or TITLING-ALTERNATES you might sometimes feel the t- and tt-swashes to be a little dominant: add DISCRETIONARY LIGATURES to reduce the stroke-length.



TITLING-ALT. + DISCRETIONARY LIGATURES



TITLING-ALTERNATES

DISCRETIONARY LIGATURES

OpenType Features

Mila Script Pro



Customized t- and tt-swashes

On the contrary, extend the stroke-length in combination with CONTEXTUAL ALTERNATES.

Intro

CONTEXTUAL ALTERNATES + DISCRETIONARY LIGATURES

Intro

CONTEXTUAL ALTERNATES

STYLISTIC ALTERNATES

OpenType Features

Mila Script Pro



STYLISTIC ALTERNATES provides alternate letterforms for some lowercase letters.

Stylistic
OPENTYPE
Alternates

STYLISTIC ALTERNATES

OpenType Features

Mila Script Pro



Alternates for | i | j | o | p | z |

Access alternates for all above letters plus corresponding swash- and accent-bearing characters.

call
pizza joe

STYLISTIC ALTERNATES

pizza joe!

standard letterforms



POSITIONAL FORMS are managed automatically within CONTEXTUAL ALTERNATES, SWASHES and TITLING-ALTERNATES. So usually ;) there's no need to interfere manually ...

Positional
forms

OPENTYPE

a aaa



Standard lowercase initial-, isolated- and terminal-forms

Larger amounts of text combined
with SWASHES OR TITLING-ALTERNATES
may go over the top. Keeping the
swashes but reducing initial- and
terminal-forms may be an option.

This all gets done
automatically. You
only have to type
while Mila Script
Pro does the rest.



Standard lowercase initial-, isolated- and terminal-forms

Larger amounts of text combined
with SWASHES OR TITLING-ALTERNATES
may go over the top. Keeping the
swashes but reducing initial- and
terminal-forms may be an option.

→ within POSITIONAL FORMS please
CHOOSE AUTOMATIC FORM

This all gets done
automatically. You
only have to type
while Mila Script
Pro does the rest.

STYLISTIC SETS

OpenType Features

Mila Script Pro



STYLISTIC SETS 01 – 15 offer some more isolated OpenType options to serve your specific needs. Check them out!

OPENTYPE

Stylistic Sets

STYLISTIC SETS

OpenType Features

Mila Script Pro



ss01

If your app doesn't support
SWASHES (see page 24), please
choose STYLISTIC SET 01.

STYLISTIC SET 01 IS EQUAL TO OPENTYPE SWASHES (P 24)

OPENTYPE
Swashes

STYLISTIC SETS

OpenType Features

Mila Script Pro



If your app doesn't support
TITLING-ALTERNATES (see page 34),
please choose STYLISTIC SET 02.

STYLISTIC SET 02 IS EQUAL TO OPENTYPE TITLING-ALTERNATES (P 34)

OPENTYPE *Titling*
Alternates



Initial and terminal swash letters

The isolated option as already described in SWASHES (page 25).

Combine CONTEXTUAL ALTERNATES with ss03 to emphasize word beginnings and endings.

verb

CONTEXTUAL ALTERNATES + STYLISTIC SET 03

verb

CONTEXTUAL ALTERNATES

verb

SWASHES

STYLISTIC SETS

OpenType Features

Mila Script Pro



Initials without beginning stroke

Mila Script Pro offers initial and isolated forms without beginning stroke.

the
analog
camera
club EST 1970

STYLISTIC SETS

OpenType Features

Mila Script Pro



Initials without beginning stroke

Mila Script Pro offers initial and isolated forms without beginning stroke.

ss04 works as a full automatic contextual substitution and effects initial and isolated letters only!

All characters you see on the right (plus all corresponding swash and accent-bearing characters) are substituted automatically.

a c d e g o q u x t

CONTEXTUAL ALTERNATES + STYLISTIC SET 04

a c d e g o q u x t

SWASHES + STYLISTIC SET 04

a c d e g o q u x t

CONTEXTUAL ALTERNATES

STYLISTIC SETS

OpenType Features

Mila Script Pro



No beginning strokes at all

Unlike to ss04, please use ss05 only for single letter substitutions as it deletes the beginning strokes from (nearly) all lowercase letters, regardless of where they are located.

You'll also find a folder called **STYLISTIC SET 05** within Indesign's glyph palette. It shows all available characters without beginning strokes.

Use ss05 only with good reason :)

PLEASE
mind out!



Terminal d

ss06 substitutes the terminal d.

It works as a contextual substitution and effects special letter combinations only.

celluloid

CONTEXTUAL ALTERNATES + STYLISTIC SET 06

celluloid

CONTEXTUAL ALTERNATES

äd hd id ld öd üd

the terminal d only works with certain letter combinations

STYLISTIC SETS

OpenType Features

Mila Script Pro



i and j with a star

ss07 puts a little star on top of
| i | and | j | (and all corresponding
swash characters).

starlight

STYLISTIC SET 07

starlight

standard i

STYLISTIC SETS

OpenType Features

Mila Script Pro



Swash n

A full automatic contextual substitution adjusts the 'swash n' to the available white space.

Combine CONTEXTUAL ALTERNATES with ss08 to emphasize the n.

Add ss08 to SWASHES OR TITLING ALTERNATES for some extra decoration.

Uncle Monday

CONTEXTUAL ALTERNATES + STYLISTIC SET 08

End Friend Inkwell

TITLING ALTERNATES + STYLISTIC SET 08



all STYLISTIC SET 08 alternates

STYLISTIC SETS

OpenType Features

Mila Script Pro



Alternative o

ss 09 substitutes | o | and all corresponding swash and accent-bearing characters.

oh you fool, go!

CONTEXTUAL ALTERNATES + STYLISTIC SET 09

oh you fool, go!

standard o

STYLISTIC SETS

OpenType Features

Mila Script Pro



Alternative p

ss 10 substitutes p and all corresponding swash characters with quite extraordinary versions.

apple

CONTEXTUAL ALTERNATES + STYLISTIC SET 10

apple

standard p

STYLISTIC SETS

OpenType Features

Mila Script Pro



Classical Script "z" and "Z"

In addition to the standard "z" and "Z" Mila Script Pro also offers more classical ones. ss11 substitutes all corresponding swash and accent-bearing characters.

STYLISTIC SET 11

Zeitgeist Jazz

standard Z and z

Zeitgeist Jazz

STYLISTIC SETS

OpenType Features

Mila Script Pro



Some extra ampersands

ss12 changes the ampersand depending on which other OpenType features are activated.



CONTEXTUAL ALTERNATES + STYLISTIC SET 12



CONTEXTUAL ALTERNATES



SWASHES + STYLISTIC SET 12



SWASHES



TITLING ALTERNATES + STYLISTIC SET 12



TITLING ALTERNATES



Upright arrows

ss 13 converts the italic standard arrows into upright ones.

→ ← ↑ ↓

→ Upright ←

STYLISTIC SET 13

↑ Arrows ↓

→ Italic ← ↑ Arrows ↓

standard italic arrows



Linked words & Extra initial and terminal swashes

The isolated option as already
described in SWASHES (page 30).

This e.g. allows the combination
with CONTEXTUAL ALTERNATES.

end of the tale

++++++end+++of+++the+++tale+++++

STYLISTIC SETS

OpenType Features

Mila Script Pro



If your app doesn't support
STYLISTIC ALTERNATES (see page 41)
please choose ss15.

STYLISTIC SET 15 IS EQUAL TO OPENTYPE STYLISTIC ALTERNATES (P 41)

Stylistic
OPENTYPE
Alternates

Introducing

Mila Script Sans



Mila Script Sans is a handdrawn “all caps” in three different weights.

Mila Script and Mila Script Sans go well together: combine them and equal the line weights by choosing Light, Regular or Bold. Always keep it way smaller than Mila Script.

Mila Script Sans also works well as a standalone. Check out the next pages and you’ll find some hidden secrets.



Introducing

Mila Script Sans



10 pt Mila Script Sans Bold

100 pt Mila Script Pro

BOLD FONTS ARE USED FOR MAKING STATEMENTS AND ATTRACTING

attention

Introducing

Mila Script Sans



20 pt Mila Script Sans Regular

100 pt Mila Script Pro

BOLD FONTS ARE USED FOR MAKING
STATEMENTS AND ATTRACTING

attention

Introducing

Mila Script Sans



30 pt Mila Script Sans Light

100 pt Mila Script Pro

BOLD FONTS ARE
ATTRACTING

attention

Features

Mila Script Sans



The Bold, Regular & Light

It's all about the line-weight!
To keep it similar throughout the font-family and your layouts, Mila Script Sans offers a Light, a Regular and a Bold version.

To equal the line weights, scale the 'Bold' to around 10 percent, the 'Regular' to around 20 percent, the 'Light' to around 30 percent.

CHANGE

10 pt Mila Script Sans Bold

THE SIZE

20 pt Mila Script Sans Regular

AND KEEP THE

30 pt Mila Script Sans Bold

(LINE)

weight

100 pt Mila Script Pro

Features

Mila Script Sans



Negative typesetting

Want to place some extra emphasis on Mila Script Sans, go negative!

Mila Script Sans offers negative typesetting with full iso latin 1 & 2 language support.

BOLD FONTS ARE USED FOR
MAKING STATEMENTS

{01234[;MŮĹŤİŁĪŃĞŮĄŁ!]56789}

Features

Mila Script Sans



Negative typesetting

It's just one click ahead:
simply activate SWASHES.

If your app doesn't support SWASHES,
please choose STYLISTIC SET 01

MAKING STATEMENTS

Mila Script Sans Light + SWASHES

MAKING STATEMENTS

Mila Script Sans Light

Features

Mila Script Sans



Bicolor typesetting

Mila Script Sans allows bicolor typesetting by layering two fonts.

BOLD FONTS ARE USED FOR
MAKING STATEMENTS

Features

Mila Script Sans



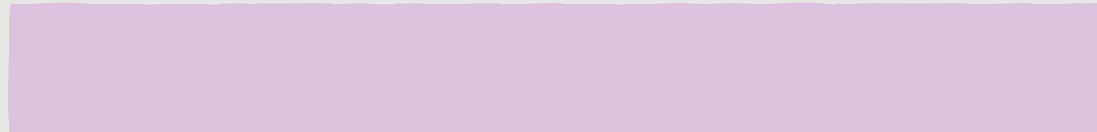
Bicolor typesetting

Activate `TITLING-ALTERNATES` to switch layer B to "all black".
Combine layer A and layer B.

If your app doesn't support `TITLING-ALTERNATES`, please choose `STYLISTIC SET 02`.

BOLD FONTS ARE USED FOR
MAKING STATEMENTS

layer A



layer B = layer A + `TITLING-ALTERNATES`

BOLD FONTS ARE USED FOR
MAKING STATEMENTS

layer A + B

Features

Mila Script Sans



Alternates without counters

STYLISTIC SET 03 deletes all counters and is combinable with all other OT-FEATURES.

MAKING STATEMENTS

FABRIK 49

STARTS NOW!

% & 0 4 6 8 9 @ Á B D Ô P Q R ® ¢ ¼ ¾ Æ Ē
% & 0 4 6 8 9 @ Á B D Ô P Q R , ® ¢ ¼ ¾ Æ Ē

all ss03 alternates

Introducing

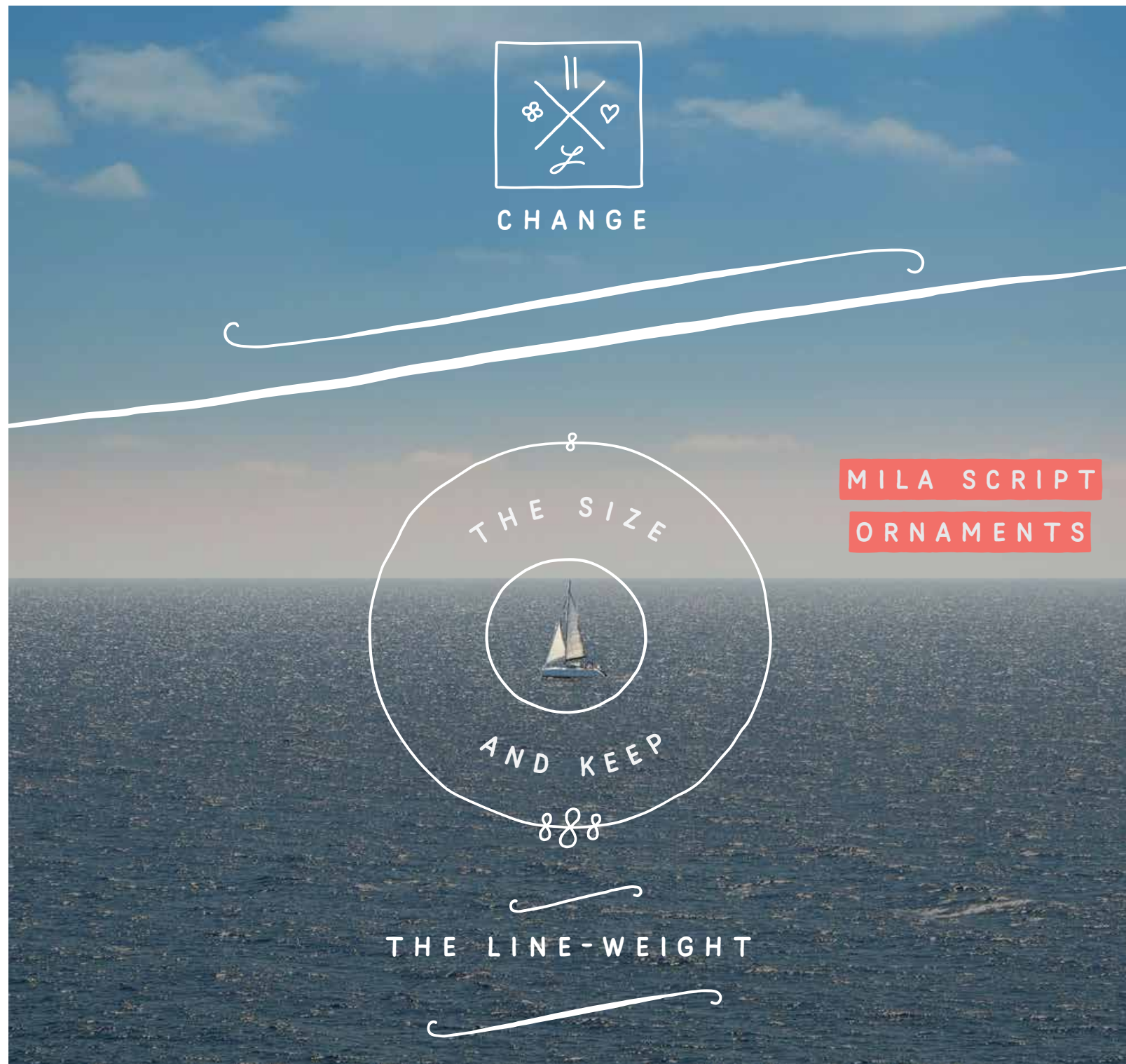
Mila Script Ornaments



Mila Script Ornaments contains 69 different swashes and symbols, all of them available in seven different sizes, which makes a total of 483 characters.

Change the size with just one click, enlarge swashes without scaling and keep the line weights equal!

All ornaments are within easy reach and there's no need to access certain symbols manually via your glyph palette.



Features

Mila Script Ornaments



Smart OpenType features

Activate CONTEXTUAL ALTERNATES.

Type 'z' and add + to change the size according to your likings.

type 'z'

Marina Catlinichta

TAKE IN THE SAILS

type 'z ++'

type 'z + + + + +'

Features

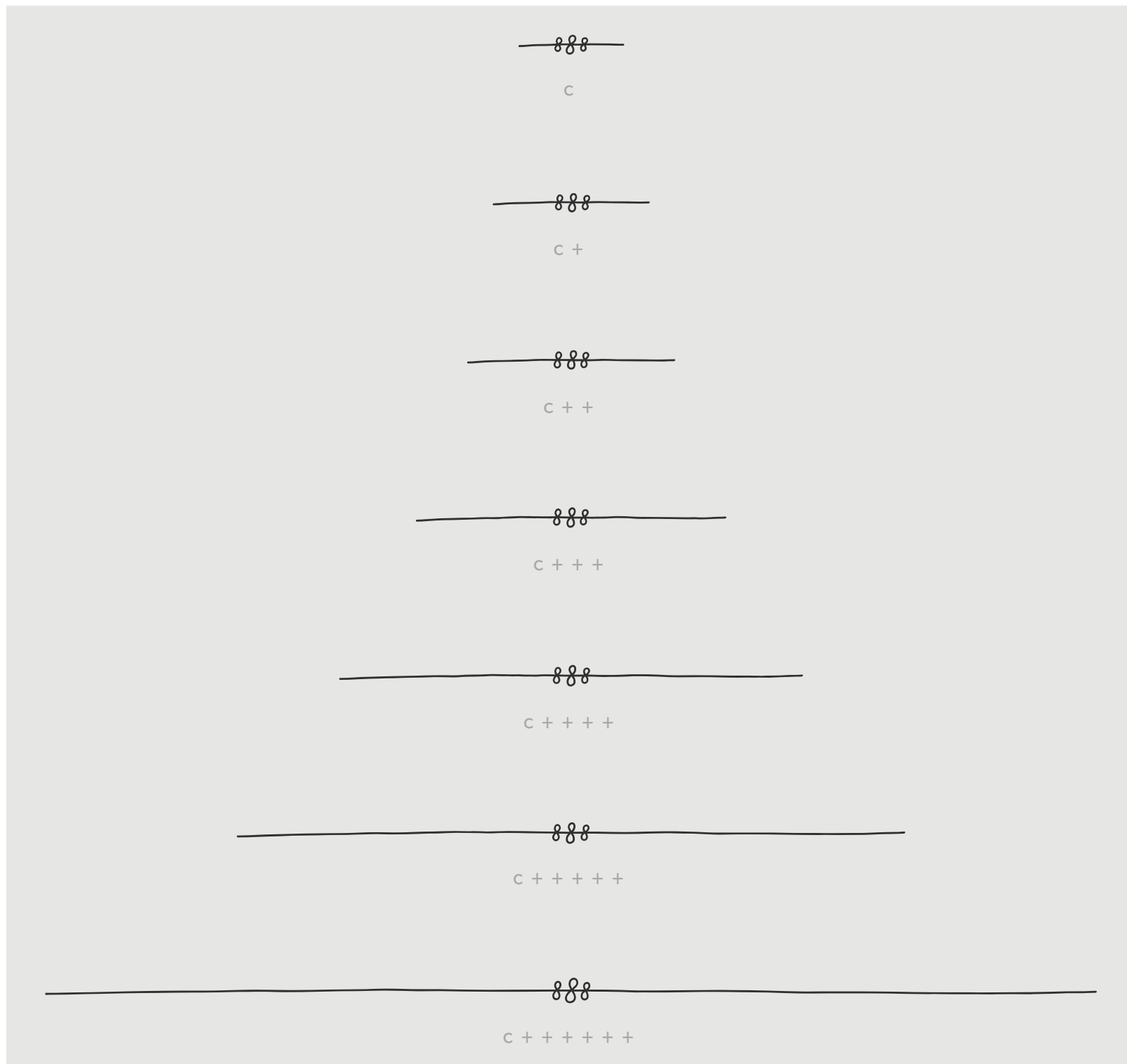
Mila Script Ornaments



Keep the line weight

Activate CONTEXTUAL ALTERNATES.

Type a letter and add + to change the size according to your likings.



Features

Mila Script Ornaments



Keep the line weight

Activate CONTEXTUAL ALTERNATES.

Type a letter and add + to change the size according to your likings.



Features

Mila Script Ornaments



Keep the line weight

Activate CONTEXTUAL ALTERNATES.

Type a letter and add + to change the size according to your likings.



W



W +



W + +



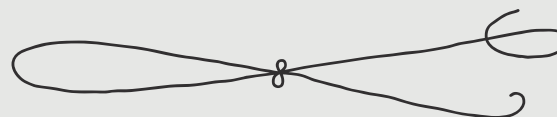
W + + +



W + + + +



W + + + + +



W + + + + + +

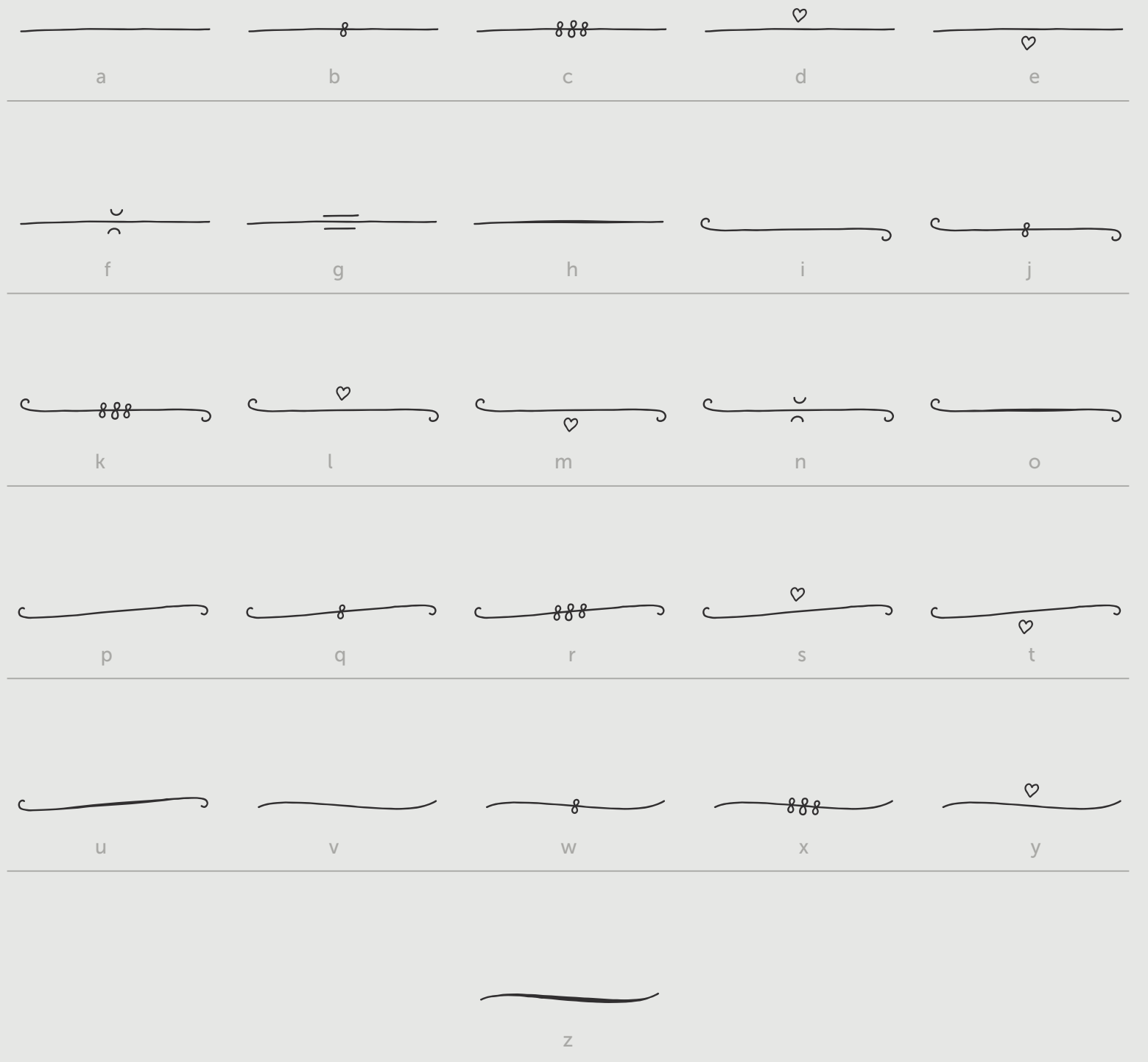
Characters

Mila Script Ornaments



Ornaments a – z

Type the letters from a – z
to access the ornaments on
the right.



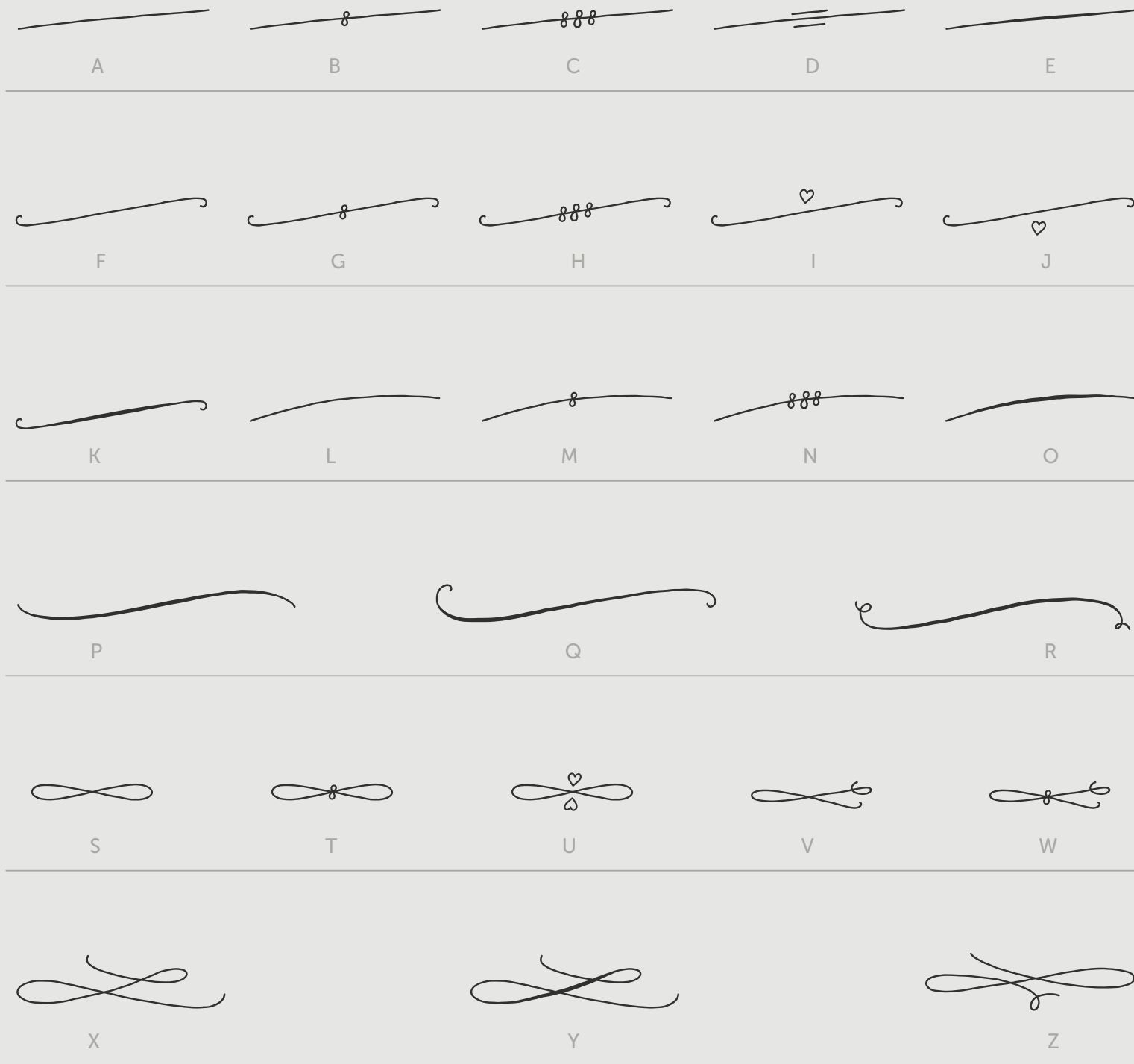
Characters

Mila Script Ornaments



Ornaments A – Z

Type the letters from A – Z
to access the ornaments on
the right.




















Characters

Mila Script Ornaments



Ornaments 1 – 0 plus some others

Type the figures from 1 – 0
to access the ornaments on
the right.

 1	 2	 3	 4	 5		
 6	 7	 8	 9	 0		
 #						
 'comma'					 'period'	 'minus'
 'semicolon'					 'colon'	 'underscore'

Please note

Mila Script Pro Family



PLEASE NOTE

Please avoid full justification
type setting in combination with
TITLING-ALTERNATES.

Please avoid the ADOBE WORLD READY
PARAGRAPH COMPOSER within Adobe
Indesign's COMPOSITION METHODS.

Imprint & Contact

Mila Script Pro Family



Designed and made with love
by Georg Herold-Wildfellner;
office@buerofliegenpilz.at

Distributed by FaceType;
<http://www.facetype.org>

Production support by
Rainer Erich Scheichelbauer;
<http://schriftlabor.at>

Mila Script Pro Family V 1.020
available as OTF, TTF & WOFF

This manual: 2015-09

Contact us

CREDITS & IMPRINT

satisfied users

DEMAND THIS FACE TO LEND

ADS AN INFORMAL TONE

8



THANK YOU!