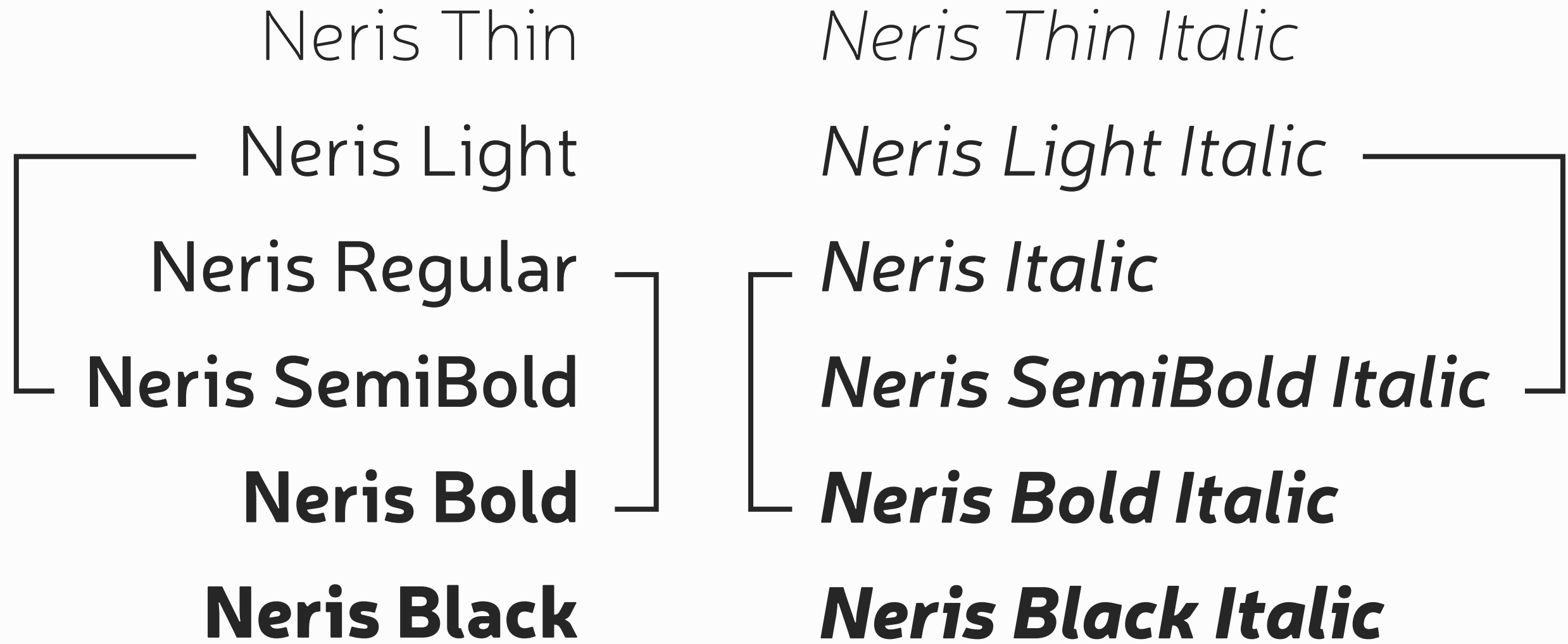


Neris

instruction guide

- 3** Weights
- 4** Uppercase
- 5** Lowercase
- 6** Numbers and symbols
- 7** OpenType features
- 8** OpenType stylistic sets

Linked weights
(aka “what happens when you
press the ‘Bold’ button”).
Same goes for the italics.



When using Microsoft Word, you'll only see upright Thin, Light, Regular and Black styles in the font menu. To access the rest, use “Bold” and/or “Italic” buttons.

NUMBERS AND SYMBOLS

Numerals: 12345678901234567890

Punctuation: *!;?¿#.,:;·/|!\{\}[]()-_“”“,«»<>”

Currency: ¢\$€₣£¥₪

Mathematics: ~=>≥<≤μ-x≠%‰+±^°

Special: &§@¶Nº†‡€ℓ©®™

Arrows: ↑↗→↘↓↙←↖↕↔

localization¹: ІЅбВГ... → ІЅδΒε...
small caps: abc → ABC
caps to small caps: “ABC&123\$?” → “ABC&123\$?”
contextual alternates: fi fl ft WEIß → fi fl ft WEIẞ
standard (f-t) ligatures²: fi ti ffl ftti...
discretionary ligatures: cf ct fy ∞ rt sf st ty
uppercase punctuation: [¿A-B:C] → [ĶA-B:C]

arrows³: §up §upr §right §downr
§down §downl §left §upl
§leftr §upd
↑ ↗ → ↘
↓ ↙ ← ↖
↔ ↕

fractions: 123/45 → 1²³/45
oldstyle numerals: 12345 → 12345
tabular numerals⁴: 12345 → 12345
superiors: 12345 → ¹²³⁴⁵
inferiors: 12345 → ₁₂₃₄₅
ordinals: No. 1 / 2a → N^o 1 / 2^a

¹ In your program’s menu select the desired language for a paragraph .

² Contextual alternates override all ligatures, standard ligatures override discretionary ones.

³ Arrows are contextual alternates.

⁴ Works with both lining and oldstyle numerals.

OPENTYPE STYLISTIC SETS¹

- 01: a æ → a œ
- 02: f fi... → f fi...
- 03: e æ œ → e æ œ
- 04: ss SS → ſ ſ
- 05: ФФ → ФФ
- 06: ДдЛл → ДДЛЛ
- 07: ФЛфлгийюкпшщтцвзж → ФЛфлгзуйюкпшщтцвзж (Bulgarian)²
- 08: ĆńÓŚŻćńóśź → ĆńÓŚŻćńóśź (Polish)
- 09: Ччбф ђгпшт → Ччбф дїū̄̄̄ (Serbian)
- 10: Ччбф ђгпт → Ччбф дїū̄̄ (Macedonian)

¹ If a program doesn't support stylistic sets, you can select desired letters directly and activate "Stylistic alternates" function.

² Language stylistic sets are workarounds in case a program doesn't support paragraph languages.

That's it.