

Samantha

User's Guide



About Samantha

This design began with a struggle. I had a lot of ideas I was experimenting with at the time, but nothing was coming together. Finally, I decided to take a break and just focus on my lettering practice. Maybe get back to basics, I thought. So with my favorite lettering tool – a Brause Rose pointed pen, I sat down and methodically began lettering. I thought back to when I first experimented with a pointed pen. I was rather young at the time and didn't quite know how to use it, but I liked that it created thick to hairline thin lines depending on pressure. It's been a favorite tool since. As I focused on the pure practice and enjoyment of seeing letters come to life, the idea I was looking for began to evolve. With measured rhythm and a focus on contrasting upright, connected strokes, the design emerged. Its optimistic style and discipline echoes that of my beautiful niece Samantha – who is excited about everything life has to offer – bright, cheerful and gracious with wisdom beyond her years.

Samantha was designed with a focus on variety, versatility, beauty and practicality. Samantha possesses a flowingly smooth elegance with the ability to take on many appearances, from simple styling to the fanciest of all flourishes with its 2700+ glyphs that take advantage of OpenType. Over 1100 alternate and swash letters feature ascenders and descenders that vary in length and complexity. Standard ligatures ensure that this font looks as perfect as possible and 20 discretionary ligatures enliven its style. Numerals are offered in their standard form, as well as an old style and a swash set too. The addition of 60 ornaments and 45 catchwords offer even more design possibilities.



Technical Details & Notes

For this font to look its best, be sure to have Contextual Alternates and Ligatures activated. To make this font as usable as possible in every situation, the lowercase letters 'b, p, r, s, x, z' have alternate versions available – beginning strokes have either been eliminated or altered to provide the best design solution when those letters are shown first or are next to another letter where it may look better:

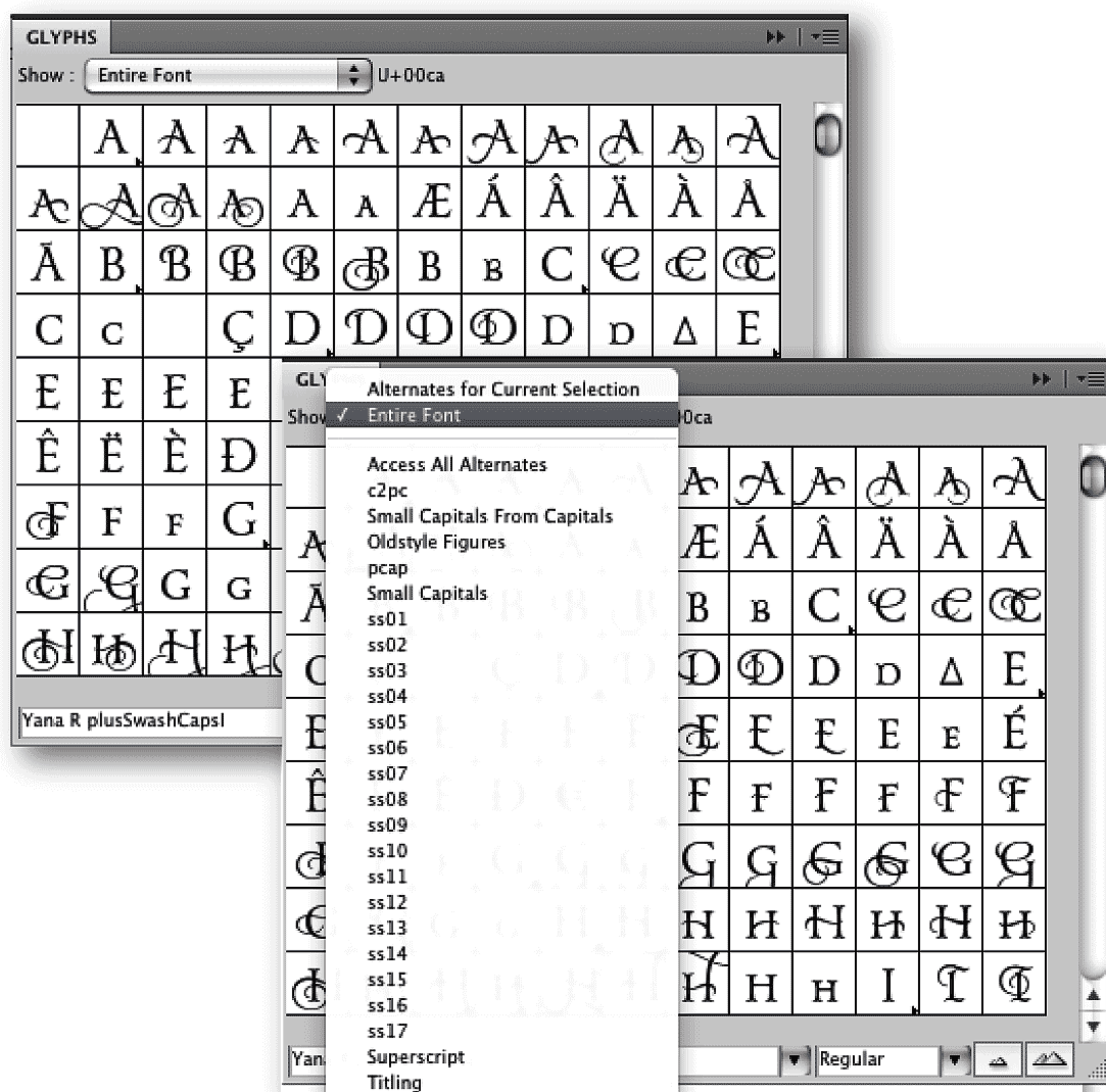
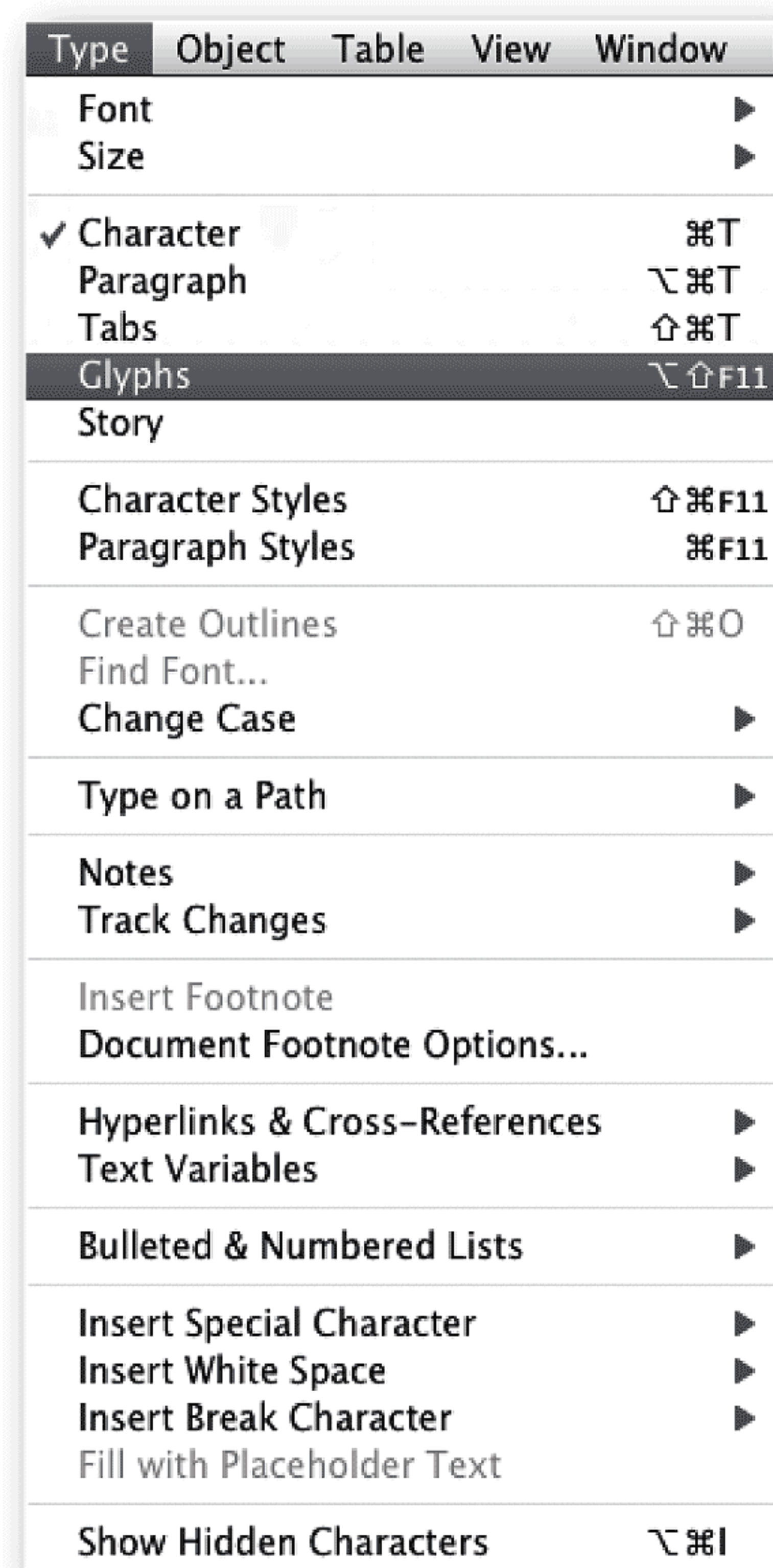
b b p p r r s s x x z z

Using OpenType

Currently, the only programs that fully support all features of OpenType are Adobe CS InDesign, Illustrator and QuarkXPress (versions 7 and above). Adobe Photoshop supports some features of OpenType, but not all. For use in Photoshop, I recommend laying out your design in InDesign, Illustrator or QuarkXPress and then copy/paste into Photoshop.

If you are using a Mac OS but do not have one of the above mentioned programs, you may use Character Viewer. Visit the Apple.com website to get detailed instructions as use varies depending on what version of the Mac OS you are using.

I have found that selecting GLYPHS from the TYPE palette in both InDesign and Illustrator, is the easiest way to view and access all of the available alternates.



From here, you may choose how you want to sort the alternates. For example, if you highlight a glyph with the text tool, you can select 'Alternates for Current Selection', and view only those specific alternates for the glyph selected. With the text tool active, double click on your glyph of choice to insert it in the text.

Swashes & Alternates



■ Standard ■ Stylistic Alternate ■ Tiling Alternate

A A *A* A A A A A A A A A A A A
A A A A A A A A A A A A A A
A A A A A A A A A A A A A A

B *B* B B B B B B B B B B B B B B B B
B B B B B

C *C* C C C C C

D *D* D D D D D D D D D D D D D D D
D D D D

E *E* E E E E E E E E E E E E E E E
E E E E E

F *F* F F F F F F F

G *G* G G G G G G G G G G G G G G G

H H H H H H H H H H H H H H H H H
H H H H H H H H H H H H H H H H

I I I I I I

J J J J J J J J J J J J J J J J J

K K K K K K K K K K K K K K K K
K K K K K K

L L L L L L L L L L L L L L L L
L L L L L L L L

M M M M M M M M M M M M M M M M
M M M M M M M M M M M M M M M

N N N N N N N N N N N N N N N N
n n n n n n n n

O O O O O O O O O O

P P P P P P P P P P

Q Q Q Q Q Q Q Q Q Q Q Q Q Q Q Q

R R R R R R R R R R R R R R R
R R R

S S S S S S S S S S S S S

T T T T T

U U U U U U U U U U U U U U U

V V V V V V V V V V V V V V V

W W W W W W W W W W W W W W W
W W

X X X X X X X X X X X X X X X
X X X X X X X X X X X X X

Y Y Y Y Y Y Y Y Y Y Y Y Y Y Y
Y Y Y Y Y

Z Z Z Z Z Z Z Z Z Z

n
n n n n n n n n n n n n n n n n n n n

o o o o o o o o o o o o o o o o o o o o

p
p p p p p p p p p p p p p p p p p p p

q q q q q q q q q q q q q q q q q q

r
r r r r r r r r r r r r r r r r r r r

s s s s s s s s s s s s s s s s s s s s

t
t t t t t

u u u u u u u u u u u u u u u u u u u

v v v v v v v v v v v v v v v v v v v v

w w w w w w w w w w w w w w w w

x x x x x x x x x x x x x x x x
x x x x x x x x x x

y y y y y y y y y y y y y y y y
y y y y y y y y y y

z z z z z z z z z z z z z z z z
z z z z z z z z z z

Numerals

1 2 3 4 5 6 7 8 9 0 · 1 2 3 4 5 6 7 8 9 0
1 2 3 4 5 6 7 8 9 0

Discretionary Ligatures

Lb Lh Lk Ll Fl Lb Lh Lk Ll
Je Th a e it st tb tf th tk tl

Ornaments



Catchwords

Announcing Featuring Introducing Thank You
The the of with vs. also for and at by until to
Mr. Mrs. Ms. Miss Notes R.S.V.P.
Who What When Where To You From Me
1st 2nd 3rd 4th 9am. 10pm.
Today Tomorrow Before After
Monday Tuesday Wednesday Thursday Friday Saturday Sunday