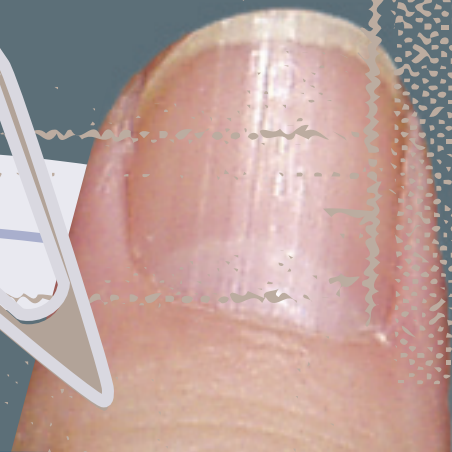
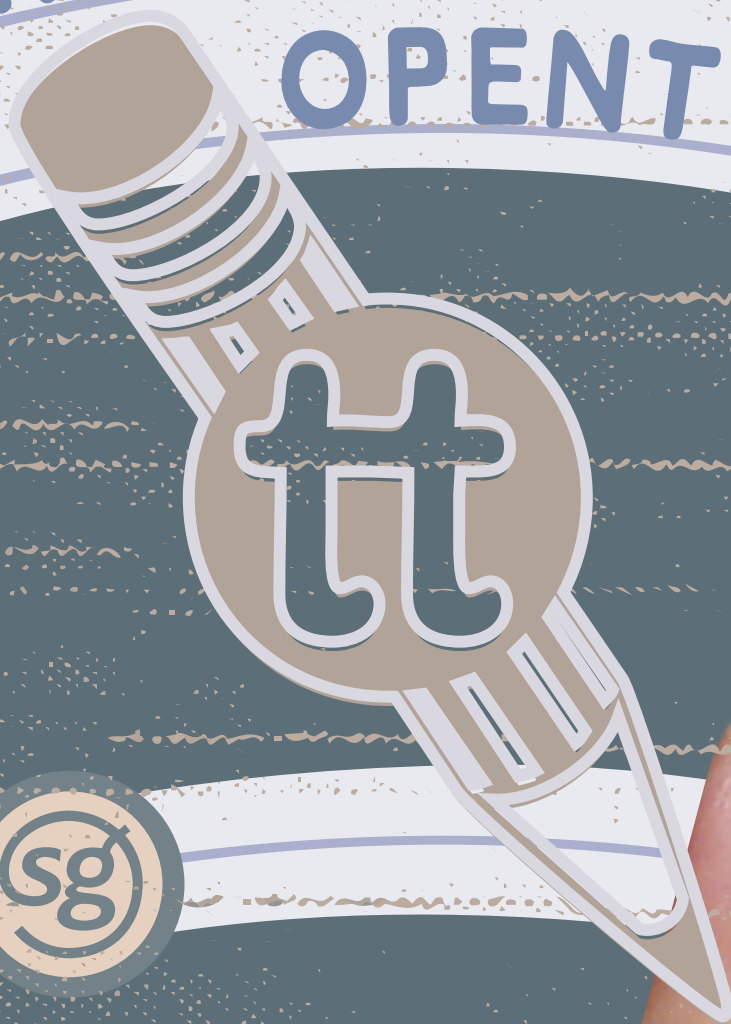


# Thumbnail Text OPENTYPE



Đđłłššýýþþžž½¼¹¾³²|~\*!"#\$%&'()\*+,-./01234567890:;<=>?@ABC  
 DEFGHIJKLMNOPQRSTUVWXYZ[\]^\_`abcdefghijklmnopqrstuvwxyz{|  
 }~ÄÅÇÉÑÖÜáàâãäåçèéêëîïñóòôõöúûüü†°¢£§•¶ß®©™™ˆ˜ÆØ∞K≤≥¥1ð  
 ΣΠπ∫ªºΩæø¿¡¢£§¶¨©ª«»…ÀÃÕœœ—“”””R\ÿŸ/α<>fifl‡·,,,%◊ÂÊÁËÈÎÏ  
 ÓÔ®ÒÚÛÜìˆ˜˘˙˚˛€ℓ#§&\*agy±μ÷÷—

## OPENTYPE FEATURES

### FRACTIONS

½ ¼ ¾

### STANDARD CHARACTERS

1/2 1/4 3/4

### STYLISTIC ALTERNATES

N&agy

### STANDARD CHARACTERS

#&agy

### STANDARD LIGATURES

fi fl

### STANDARD CHARACTERS

fi fl

### MATH SYMBOLS & OTHER ALTERNATES

ℓ#§&\*±μ÷÷\$1RK—

### SUPERSCRIPT

1 2 3 a0

### STANDARD CHARACTERS

123ao

Sixty zippers were quickly  
picked from the woven jute bag.



Thumbnail Text SG Regular Std

Make the notes on this  
**BLUEPRINT**

very clear. They must indicate a

10 pts

This lesson shows the development of a 'Thumbnail Sketch' for the construction of the Acme Home Power Station. A. (Step 1) Make rough marks indicating position of the magneto assembly relative to all other electrical components. B.

9 pts

This lesson shows the development of a 'Thumbnail Sketch' for the construction of the Acme Home Power Station. A. (Step 1) Make rough marks indicating position of the magneto assembly relative to all other electrical components. B. (Step 2) Check the accuracy of all measurements

8 pts

This lesson shows the development of a 'Thumbnail Sketch' for the construction of the Acme Home Power Station. A. (Step 1) Make rough marks indicating position of the magneto assembly relative to all other electrical components. B. (Step 2) Check the accuracy of all measurements to be used in

**NEW WALL** facing