

Menga™ / Doubletwo
Studios



TEXT SAMPLES

TECHNICAL

Elegant & Constructed

Dynamic Modern Shapes

OpenType

SMALL CAPS & stylistic alternates

Language

supported codepages:

LATIN 1 ⁽¹²⁵²⁾, LATIN 2 ⁽¹²⁵⁰⁾, TURKISH ⁽¹²⁵⁴⁾, BALTIC ⁽¹²⁵⁷⁾

INTRODUCTION

About Menga

LECTER JOHNSON ABOUT THE CREATION OF MENGA AND SOME BACKGROUND INFORMATION.

The creation of „Menga“ was basically influenced by a modified version of a font called „Isonorm“. I got in touch with it when I was doing some research on electronics manufacturers. At that time I was playing around with Illustrator to get some better results in monoline curves. I pretty much liked the constructed look of some attempts and quickly managed to finish my first layouts of the basic lowercase glyphs. The first letter of „Menga“ was the „g“ and some other early letters where „e“, „a“, „n“ and „m“. That's where the name „Menga“ comes from – it was one of the first words that I could put together from those first letters. It became a workingtitle and after a while I decided to keep the name.



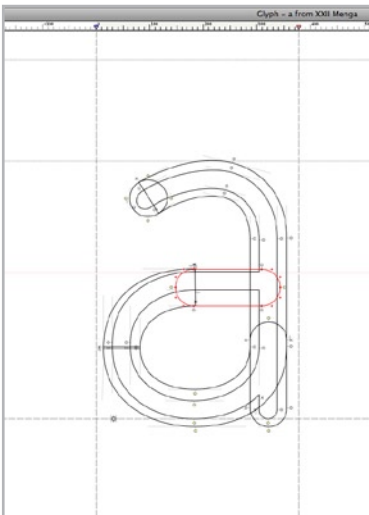
Seperate weights

The idea was to keep the clear, technical and constructed shapes but take one step further into a copytext-typeface. This becomes visible in the ends of strokes that enhance the vertical axis on the baseline and the x-height. For use in headlines or logos some stylistic alternate glyphs were added in the font. Also implemented is a small caps character set.

After all Menga became a straightforward, plain and honest typeface with harmonic shapes and a special, graving look of some characters – ahead the versal „M“ or „N“.

Menga now comes in four weights and supports a lot of languages.

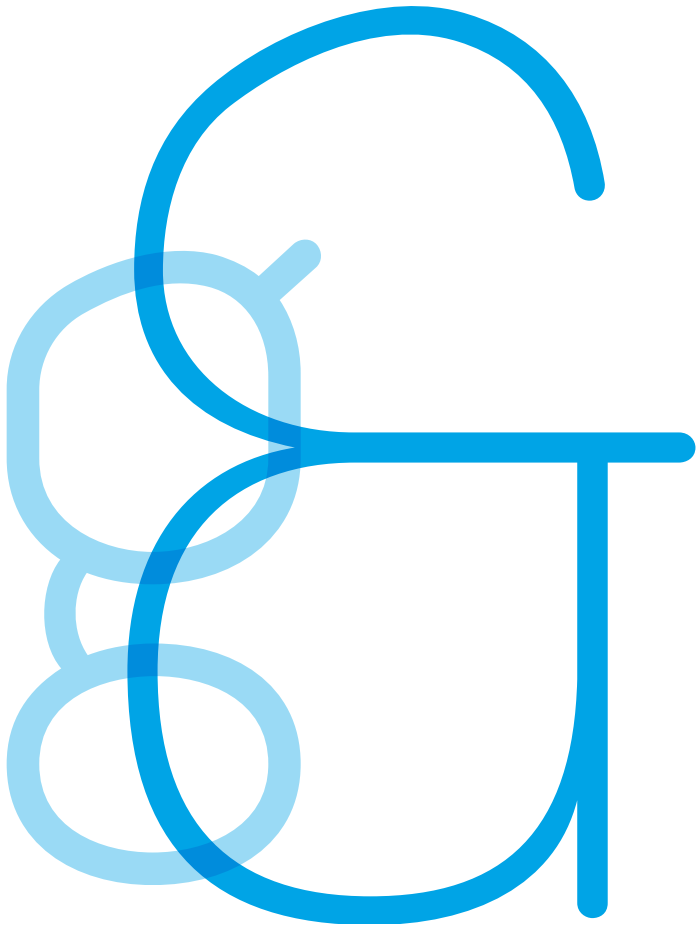
At this point a big thanx goes out to Iginio Marini and his iKern-service (www.ikern.com). I chose Iginio to do the spacing and kerning for Menga and he did an amazing job. It was impressive to see that the words became alive in a perfect rhythm.



Early creation state



CHARACTERSET



A B C D E
F G H I J K
L M N O P
Q R S T U
V W X Y Z

abcdefghijklmnopqrstuvwxyz

abcdefghijklmnopqrstuvwxyz

abcdefghijklmnopqrstuvwxyz

abcdefghijklmnopqrstuvwxyz

TEXT SAMPLES

XXII MENGA™ LIGHT (12PT)

Sed tin ex ex exeraestrud eu feu facilis issenibh el ut in velisi bla facipis eumsandit am iriureet, sed eu feu faciduisis nonulla alississed te feuis ad magnit am quis nis nullam dipit vulput lan etum quisi blaorer in hent am incin henit volore dolorper iniam verat velent lutpat nullandiam aliquam do delit et vullandre cor ilit lore dolortio odit ad dit nisim quisl doloborem zzriure ex erillan dionse con veniametum vullaor peraessit inibh euisisi. Xer sustrud te digna acipsustie volorero

XXII MENGA™ REGULAR (12PT)

Sed tin ex ex exeraestrud eu feu facilis issenibh el ut in velisi bla facipis eumsandit am iriureet, sed eu feu faciduisis nonulla alississed te feuis ad magnit am quis nis nullam dipit vulput lan etum quisi blaorer in hent am incin henit volore dolorper iniam verat velent lutpat nullandiam aliquam do delit et vullandre cor ilit lore dolortio odit ad dit nisim quisl doloborem zzriure ex erillan dionse con veniametum vullaor peraessit inibh euisisi. Xer sustrud te digna acipsustie volo-

XXII MENGA™ BOLD (12PT)

Sed tin ex ex exeraestrud eu feu facilis issenibh el ut in velisi bla facipis eumsandit am iriureet, sed eu feu faciduisis nonulla alississed te feuis ad magnit am quis nis nullam dipit vulput lan etum quisi blaorer in hent am incin henit volore dolorper iniam verat velent lutpat nullandiam aliquam do delit et vullandre cor ilit lore dolortio odit ad dit nisim quisl doloborem zzriure ex erillan dionse con veniametum vullaor peraessit inibh euisisi. Xer sustrud te digna acipsustie

XXII MENGA™ BLACK (12PT)

Sed tin ex ex exeraestrud eu feu facilis issenibh el ut in velisi bla facipis eumsandit am iriureet, sed eu feu faciduisis nonulla alississed te feuis ad magnit am quis nis nullam dipit vulput lan etum quisi blaorer in hent am incin henit volore dolorper iniam verat velent lutpat nullandiam aliquam do delit et vullandre cor ilit lore dolortio odit ad dit nisim quisl doloborem zzriure ex erillan dionse con veniametum vullaor peraessit inibh euisisi. Xer sustrud te digna acipsus-

XXII MENGA™ LIGHT (10PT)

Sed tin ex ex exeraestrud eu feu facilis issenibh el ut in velisi bla facipis eumsandit am iriureet, sed eu feu faciduisis nonulla alississed te feuis ad magnit am quis nis nullam dipit vulput lan

XXII MENGA™ LIGHT (8PT)

Sed tin ex ex exeraestrud eu feu facilis issenibh el ut in velisi bla facipis eumsandit am iriureet, sed eu feu faciduisis nonulla alississed te feuis ad magnit am quis nis nullam dipit vulput lan etum quisi blaorer in hent am incin henit volore dolorper iniam verat velent lutpat nullandiam aliquam do

XXII MENGA™ REGULAR (10PT)

Sed tin ex ex exeraestrud eu feu facilis issenibh el ut in velisi bla facipis eumsandit am iriureet, sed eu feu faciduisis nonulla alississed te feuis ad magnit am quis nis nullam dipit vulput lan

XXII MENGA™ REGULAR (8PT)

Sed tin ex ex exeraestrud eu feu facilis issenibh el ut in velisi bla facipis eumsandit am iriureet, sed eu feu faciduisis nonulla alississed te feuis ad magnit am quis nis nullam dipit vulput lan etum quisi blaorer in hent am incin henit volore dolorper iniam verat velent lutpat nullandiam aliquam do

XXII MENGA™ BOLD (10PT)

Sed tin ex ex exeraestrud eu feu facilis issenibh el ut in velisi bla facipis eumsandit am iriureet, sed eu feu faciduisis nonulla alississed te feuis ad magnit am quis nis nullam dipit vulput lan

XXII MENGA™ BOLD (8PT)

Sed tin ex ex exeraestrud eu feu facilis issenibh el ut in velisi bla facipis eumsandit am iriureet, sed eu feu faciduisis nonulla alississed te feuis ad magnit am quis nis nullam dipit vulput lan etum quisi blaorer in hent am incin henit volore dolorper iniam verat velent lutpat nullandiam aliquam

XXII MENGA™ BLACK (10PT)

Sed tin ex ex exeraestrud eu feu facilis issenibh el ut in velisi bla facipis eumsandit am iriureet, sed eu feu faciduisis nonulla alississed te feuis ad magnit am quis nis nullam dipit vulput lan

XXII MENGA™ BLACK (8PT)

Sed tin ex ex exeraestrud eu feu facilis issenibh el ut in velisi bla facipis eumsandit am iriureet, sed eu feu faciduisis nonulla alississed te feuis ad magnit am quis nis nullam dipit vulput lan etum quisi blaorer in hent am incin henit volore dolorper iniam verat velent lutpat nullandiam

OPENTYPE FEATURES

Included OpenType-Features

¿B Case Sensitive forms (CASE & CPSP)

Case-Feature formats text in uppercase and also applies alternate positioning of punctuation and spacing designed for capital use (CPSP).

i¿abc?! (def-) > i¿ABC?! (DEF-)

bb Small Caps & All Small Caps (smcp & s2sc)

Small-Caps-Feature replaces lowercase letters with small capitals.

'Small Caps!?' > 'SMALL CAPS!?'

Bß All-Small-Caps-Feature replaces also capital letters and punctuation with small caps variations.

'All Small Caps!?' > 'ALL SMALL CAPS!?'

„123 & #456*“ > „123 & #456*“

bb Stylistic Alternates (SALT & SS01)

Small Caps replaces letters with alternates.

abdfmnpqrtu > abdfmnpqrtu

123 Tabular Lining Figures (tnum)

Tabular-figures sets a fixed width for tables.

1234567890 > 1,2,3,4,5,6,7,8,9,0

How to handle the OpenType features?

In Photoshop & InDesign

To activate or deactivate the features in Photoshop & InDesign just open (if not yet) the Character-palette [[Window/Character](#)] and the arrow near the upper right of the palette brings up a menu with options to use OpenType features if available.

Illustrator

To activate or deactivate the features in Illustrator just open (if not yet) the Character-palette [[Window/Type/OpenType](#)] with options to use OpenType features if available.

