

THE STORY OF Proxima Nova

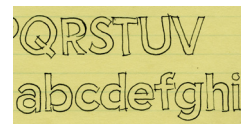
Proxima Nova Family

- Proxima Nova Thin
- Proxima Nova Thin Italic*
- Proxima Nova Light
- Proxima Nova Light Italic*
- Proxima Nova Regular
- Proxima Nova Regular Italic*
- Proxima Nova Medium
- Proxima Nova Medium Italic*
- Proxima Nova Semibold
- Proxima Nova Semibold Italic*
- Proxima Nova Bold
- Proxima Nova Bold Italic*
- Proxima Nova Extrabold
- Proxima Nova Extrabold Italic*
- Proxima Nova Black
- Proxima Nova Black Italic*

- Proxima Nova Condensed Thin
- Proxima Nova Condensed Thin Italic*
- Proxima Nova Condensed Light
- Proxima Nova Condensed Light Italic*
- Proxima Nova Condensed Regular
- Proxima Nova Condensed Regular Italic*
- Proxima Nova Condensed Medium
- Proxima Nova Condensed Medium Italic*
- Proxima Nova Condensed Semibold
- Proxima Nova Condensed Semibold Italic*
- Proxima Nova Condensed Bold
- Proxima Nova Condensed Bold Italic*
- Proxima Nova Condensed Extrabold
- Proxima Nova Condensed Extrabold Italic*
- Proxima Nova Condensed Black
- Proxima Nova Condensed Black Italic*

- Proxima Nova Extra Condensed Thin
- Proxima Nova Extra Condensed Thin Italic*
- Proxima Nova Extra Condensed Light
- Proxima Nova Extra Condensed Light Italic*
- Proxima Nova Extra Condensed Regular
- Proxima Nova Extra Condensed Regular Italic*
- Proxima Nova Extra Condensed Medium
- Proxima Nova Extra Condensed Medium Italic*
- Proxima Nova Extra Condensed Semibold
- Proxima Nova Extra Condensed Semibold Italic*
- Proxima Nova Extra Condensed Bold
- Proxima Nova Extra Condensed Bold Italic*
- Proxima Nova Extra Condensed Extrabold
- Proxima Nova Extra Condensed Extrabold Italic*
- Proxima Nova Extra Condensed Black
- Proxima Nova Extra Condensed Black Italic*

PROXIMA NOVA is a typeface idea I've been working on in various forms since 1981. I originally called it **Zanzibar**, just because I liked the word. It was nothing more than rough sketches back then, but the concept for the lowercase was quite similar to how it eventually turned out. The caps came later. ♦ In 1991, I was art director of *Business Ethics* magazine, where I was using Gill Sans. I liked it, but wished for something a bit plainer and more modern that still had a geometric feel. Such a face did not seem to exist. Starting from my old Zanzibar idea, I began working on a new typeface to fill this void. I came up with the name **Visigothic**, since it was modeled somewhat on American "gothic" faces. ▶ Some existing faces influenced the look of Visigothic. I wanted the general proportions and stroke contrast of Helvetica or Akzidenz Grotesk, but with construction and details borrowed variously from Futura, Kabel, the ATF gothics (Copperplate Gothic, News Gothic, Franklin Gothic, etc.) and the U.S. Federal Highway signage typeface. The result was a hybrid; a face combining modern, even-width proportions with a somewhat geometric appearance. ★ I released it through FontHaus in 1994 as **Proxima Sans**, a family of six fonts—Regular, Medium, and Black with matching italics. I dropped the name Visigothic, first because of its similarity to the name of another recently released font, Visigoth, and, second, it was kind of a bad pun. I chose the name Proxima Sans because it was *near to* other *sans serifs* in design but also because those letters happened to display some of the distinctive characteristics of the design. ● I had plans to do more weights, small caps, a condensed version, and other ideas. But between lackluster sales, becoming a new parent, and taking on a new full-time job, I found I didn't have the time or energy to continue working on it for a while. ▶ By the early 2000s, I started to get requests to expand the Proxima Sans family and *Rolling Stone* magazine chose it as part of its redesign in 2003. Encouraged by all this, I went back to work on a new Proxima Sans family even more ambitious than what I had originally planned. ♦ In 2005, I re-released it as **Proxima Nova**, a family of 42 fonts—seven weights and three widths with matching italics. Built from the start with the OpenType format in mind, it featured advanced typographic features like small caps, different figure styles, fractions, and alternate characters, enough to take on the most demanding typographic applications. ● Proxima Nova contained other improvements over the original. I reviewed and refined every character. I rebuilt the italics from scratch. I redid the hinting for better on-screen display. The character set grew from 245 up to 699 characters (1115 with the latest version). I kept the special characters from the original, like the arrows and other dingbats, but gave them proper Unicode values, and created proper math symbols in the positions they'd previously occupied. I scrapped and rebuilt the spacing and kerning. As in Proxima Sans, the italics have been optically adjusted to eliminate the distortion caused by simply slanting the letters—*true italics*, not simple obliques. ▶ It's now been over ten years since I first released Proxima Nova. Since then, I've continued to make improvements and enhancements, such as additional language support, including Vietnamese, Cyrillic and Greek, and have added a new weight—Medium—bringing the total number of fonts in the family to 48. ■ —Mark Simonson



ZANZIBAR SKETCH, C. 1981.

Features

CASE-SENSITIVE CHARACTERS
(x-ray) → (X-RAY)

TRUE SMALL CAPS

TRUE SMALL CAPS

LINING & OLD STYLE FIGURES
1234567890 \$¢€£¥
1234567890 \$£¢€£¥

PROPORTIONAL AND TABULAR FIGURES

12345 → 12345
12345 → 12345

FRACTION SUPPORT

2/3, 1/8, 53/72...
→ ⅔ ⅛, 53⁄72...

ORDINAL SUPPORT

1st, 2nd, 3rd, 4th...
→ 1st, 2nd, 3rd, 4th...

ALTERNATE CHARACTERS

Gladly → Gladly
01 → 01

LIGATURES

ff fi ffi fl ffl fb fh fj ffj fk

DINGBATS



EXTENDED LANGUAGE SUPPORT

ĐPŸĂĈĐĖŃĠĤĲŁŦŠĐ...
ĐPŸĂĈĐĖŃĠĤĲŁŦŠ...
đpÿăĉđėņġhıķł'ôșțđ...

EXTENDED CURRENCY SUPPORT

\$¢€£¥ƒ€££PŦRšPř
đŋwđđ

Proxima Nova Display Sample Summary

PROXIMA NOVA THIN

1957 SPUTNIK 1958 EXPLORER 1961 VOSTOK 1962 MERC
1. MERCURY 2. VENUS 3. EARTH 4. MARS 5. JUPITER 6. SATU
Vexed Buzz quietly watched Neil jumping to mark the surf

PROXIMA NOVA LIGHT

1957 SPUTNIK 1958 EXPLORER 1961 VOSTOK 1962 MERC
1. MERCURY 2. VENUS 3. EARTH 4. MARS 5. JUPITER 6. SATU
Vexed Buzz quietly watched Neil jumping to mark the surf

PROXIMA NOVA REGULAR

1957 SPUTNIK 1958 EXPLORER 1961 VOSTOK 1962 MER
1. MERCURY 2. VENUS 3. EARTH 4. MARS 5. JUPITER 6. SAT
Vexed Buzz quietly watched Neil jumping to mark the su

PROXIMA NOVA MEDIUM

1957 SPUTNIK 1958 EXPLORER 1961 VOSTOK 1962 MER
1. MERCURY 2. VENUS 3. EARTH 4. MARS 5. JUPITER 6. SA
Vexed Buzz quietly watched Neil jumping to mark the su

PROXIMA NOVA SEMIBOLD

1957 SPUTNIK 1958 EXPLORER 1961 VOSTOK 1962 ME
1. MERCURY 2. VENUS 3. EARTH 4. MARS 5. JUPITER 6. SA
Vexed Buzz quietly watched Neil jumping to mark the su

PROXIMA NOVA BOLD

1957 SPUTNIK 1958 EXPLORER 1961 VOSTOK 1962 M
1. MERCURY 2. VENUS 3. EARTH 4. MARS 5. JUPITER 6. S
Vexed Buzz quietly watched Neil jumping to mark the s

PROXIMA NOVA EXTRABOLD

1957 SPUTNIK 1958 EXPLORER 1961 VOSTOK 1962 M
1. MERCURY 2. VENUS 3. EARTH 4. MARS 5. JUPITER 6.
Vexed Buzz quietly watched Neil jumping to mark the

PROXIMA NOVA BLACK

1957 SPUTNIK 1958 EXPLORER 1961 VOSTOK 1962
1. MERCURY 2. VENUS 3. EARTH 4. MARS 5. JUPITER 6.
Vexed Buzz quietly watched Neil jumping to mark the

Proxima Nova Display Sample Summary

PROXIMA NOVA THIN ITALIC

1957 SPUTNIK 1958 EXPLORER 1961 VOSTOK 1962 MERC
1. MERCURY 2. VENUS 3. EARTH 4. MARS 5. JUPITER 6. SATU
Vexed Buzz quietly watched Neil jumping to mark the surf

PROXIMA NOVA LIGHT ITALIC

1957 SPUTNIK 1958 EXPLORER 1961 VOSTOK 1962 MERC
1. MERCURY 2. VENUS 3. EARTH 4. MARS 5. JUPITER 6. SATU
Vexed Buzz quietly watched Neil jumping to mark the sur

PROXIMA NOVA REGULAR ITALIC

1957 SPUTNIK 1958 EXPLORER 1961 VOSTOK 1962 MER
1. MERCURY 2. VENUS 3. EARTH 4. MARS 5. JUPITER 6. SAT
Vexed Buzz quietly watched Neil jumping to mark the su

PROXIMA NOVA MEDIUM ITALIC

1957 SPUTNIK 1958 EXPLORER 1961 VOSTOK 1962 ME
1. MERCURY 2. VENUS 3. EARTH 4. MARS 5. JUPITER 6. SA
Vexed Buzz quietly watched Neil jumping to mark the su

PROXIMA NOVA SEMIBOLD ITALIC

1957 SPUTNIK 1958 EXPLORER 1961 VOSTOK 1962 ME
1. MERCURY 2. VENUS 3. EARTH 4. MARS 5. JUPITER 6. SA
Vexed Buzz quietly watched Neil jumping to mark the s

PROXIMA NOVA BOLD ITALIC

1957 SPUTNIK 1958 EXPLORER 1961 VOSTOK 1962 M
1. MERCURY 2. VENUS 3. EARTH 4. MARS 5. JUPITER 6. S
Vexed Buzz quietly watched Neil jumping to mark the s

PROXIMA NOVA EXTRABOLD ITALIC

1957 SPUTNIK 1958 EXPLORER 1961 VOSTOK 1962 M
1. MERCURY 2. VENUS 3. EARTH 4. MARS 5. JUPITER 6.
Vexed Buzz quietly watched Neil jumping to mark the

PROXIMA NOVA BLACK ITALIC

1957 SPUTNIK 1958 EXPLORER 1961 VOSTOK 1962
1. MERCURY 2. VENUS 3. EARTH 4. MARS 5. JUPITER 6.
Vexed Buzz quietly watched Neil jumping to mark th

Proxima Nova Display Sample Summary

PROXIMA NOVA CONDENSED THIN

1957 SPUTNIK 1958 EXPLORER 1961 VOSTOK 1962 MERCURY 1964 RAN
1. MERCURY 2. VENUS 3. EARTH 4. MARS 5. JUPITER 6. SATURN 7. URANUS
Vexed Buzz quietly watched Neil jumping to mark the surface. Vexed B

PROXIMA NOVA CONDENSED LIGHT

1957 SPUTNIK 1958 EXPLORER 1961 VOSTOK 1962 MERCURY 1964 R
1. MERCURY 2. VENUS 3. EARTH 4. MARS 5. JUPITER 6. SATURN 7. URANU
Vexed Buzz quietly watched Neil jumping to mark the surface. Vexed

PROXIMA NOVA CONDENSED REGULAR

1957 SPUTNIK 1958 EXPLORER 1961 VOSTOK 1962 MERCURY 1964
1. MERCURY 2. VENUS 3. EARTH 4. MARS 5. JUPITER 6. SATURN 7. URAN
Vexed Buzz quietly watched Neil jumping to mark the surface. Vexe

PROXIMA NOVA CONDENSED MEDIUM

1957 SPUTNIK 1958 EXPLORER 1961 VOSTOK 1962 MERCURY 1964
1. MERCURY 2. VENUS 3. EARTH 4. MARS 5. JUPITER 6. SATURN 7. URA
Vexed Buzz quietly watched Neil jumping to mark the surface. Vex

PROXIMA NOVA CONDENSED SEMIBOLD

1957 SPUTNIK 1958 EXPLORER 1961 VOSTOK 1962 MERCURY 19
1. MERCURY 2. VENUS 3. EARTH 4. MARS 5. JUPITER 6. SATURN 7. UR
Vexed Buzz quietly watched Neil jumping to mark the surface. Ve

PROXIMA NOVA CONDENSED BOLD

1957 SPUTNIK 1958 EXPLORER 1961 VOSTOK 1962 MERCURY 1
1. MERCURY 2. VENUS 3. EARTH 4. MARS 5. JUPITER 6. SATURN 7.
Vexed Buzz quietly watched Neil jumping to mark the surface. V

PROXIMA NOVA CONDENSED EXTRABOLD

1957 SPUTNIK 1958 EXPLORER 1961 VOSTOK 1962 MERCURY
1. MERCURY 2. VENUS 3. EARTH 4. MARS 5. JUPITER 6. SATURN 7.
Vexed Buzz quietly watched Neil jumping to mark the surface.

PROXIMA NOVA CONDENSED BLACK

1957 SPUTNIK 1958 EXPLORER 1961 VOSTOK 1962 MERCURY
1. MERCURY 2. VENUS 3. EARTH 4. MARS 5. JUPITER 6. SATURN
Vexed Buzz quietly watched Neil jumping to mark the surfac

Proxima Nova Display Sample Summary

PROXIMA NOVA CONDENSED THIN ITALIC

1957 SPUTNIK 1958 EXPLORER 1961 VOSTOK 1962 MERCURY 1964 RAN
1. MERCURY 2. VENUS 3. EARTH 4. MARS 5. JUPITER 6. SATURN 7. URANUS
Vexed Buzz quietly watched Neil jumping to mark the surface. Vexed B

PROXIMA NOVA CONDENSED LIGHT ITALIC

1957 SPUTNIK 1958 EXPLORER 1961 VOSTOK 1962 MERCURY 1964 R
1. MERCURY 2. VENUS 3. EARTH 4. MARS 5. JUPITER 6. SATURN 7. URANU
Vexed Buzz quietly watched Neil jumping to mark the surface. Vexed

PROXIMA NOVA CONDENSED REGULAR ITALIC

1957 SPUTNIK 1958 EXPLORER 1961 VOSTOK 1962 MERCURY 1964
1. MERCURY 2. VENUS 3. EARTH 4. MARS 5. JUPITER 6. SATURN 7. URAN
Vexed Buzz quietly watched Neil jumping to mark the surface. Vexe

PROXIMA NOVA CONDENSED MEDIUM ITALIC

1957 SPUTNIK 1958 EXPLORER 1961 VOSTOK 1962 MERCURY 1964
1. MERCURY 2. VENUS 3. EARTH 4. MARS 5. JUPITER 6. SATURN 7. URA
Vexed Buzz quietly watched Neil jumping to mark the surface. Vex

PROXIMA NOVA CONDENSED SEMIBOLD ITALIC

1957 SPUTNIK 1958 EXPLORER 1961 VOSTOK 1962 MERCURY 19
1. MERCURY 2. VENUS 3. EARTH 4. MARS 5. JUPITER 6. SATURN 7. UR
Vexed Buzz quietly watched Neil jumping to mark the surface. Ve

PROXIMA NOVA CONDENSED BOLD ITALIC

1957 SPUTNIK 1958 EXPLORER 1961 VOSTOK 1962 MERCURY 1
1. MERCURY 2. VENUS 3. EARTH 4. MARS 5. JUPITER 6. SATURN 7. U
Vexed Buzz quietly watched Neil jumping to mark the surface. V

PROXIMA NOVA CONDENSED EXTRABOLD ITALIC

1957 SPUTNIK 1958 EXPLORER 1961 VOSTOK 1962 MERCURY
1. MERCURY 2. VENUS 3. EARTH 4. MARS 5. JUPITER 6. SATURN 7.
Vexed Buzz quietly watched Neil jumping to mark the surface

PROXIMA NOVA CONDENSED BLACK ITALIC

1957 SPUTNIK 1958 EXPLORER 1961 VOSTOK 1962 MERCU
1. MERCURY 2. VENUS 3. EARTH 4. MARS 5. JUPITER 6. SATURN
Vexed Buzz quietly watched Neil jumping to mark the surfac

Proxima Nova Display Sample Summary

PROXIMA NOVA EXTRA CONDENSED THIN

1957 SPUTNIK 1958 EXPLORER 1961 VOSTOK 1962 MERCURY 1964 RANGER 1965 GEMINI 1966
1. MERCURY 2. VENUS 3. EARTH 4. MARS 5. JUPITER 6. SATURN 7. URANUS 8. NEPTUNE 9. PLUTO?
Vexed Buzz quietly watched Neil jumping to mark the surface. Vexed Buzz quietly watched

PROXIMA NOVA EXTRA CONDENSED LIGHT

1957 SPUTNIK 1958 EXPLORER 1961 VOSTOK 1962 MERCURY 1964 RANGER 1965 GEMINI
1. MERCURY 2. VENUS 3. EARTH 4. MARS 5. JUPITER 6. SATURN 7. URANUS 8. NEPTUNE 9. PLU
Vexed Buzz quietly watched Neil jumping to mark the surface. Vexed Buzz quietly wat

PROXIMA NOVA EXTRA CONDENSED REGULAR

1957 SPUTNIK 1958 EXPLORER 1961 VOSTOK 1962 MERCURY 1964 RANGER 1965 GEM
1. MERCURY 2. VENUS 3. EARTH 4. MARS 5. JUPITER 6. SATURN 7. URANUS 8. NEPTUNE 9.
Vexed Buzz quietly watched Neil jumping to mark the surface. Vexed Buzz quietly

PROXIMA NOVA EXTRA CONDENSED MEDIUM

1957 SPUTNIK 1958 EXPLORER 1961 VOSTOK 1962 MERCURY 1964 RANGER 1965 G
1. MERCURY 2. VENUS 3. EARTH 4. MARS 5. JUPITER 6. SATURN 7. URANUS 8. NEPTUNE 9
Vexed Buzz quietly watched Neil jumping to mark the surface. Vexed Buzz quietl

PROXIMA NOVA EXTRA CONDENSED SEMIBOLD

1957 SPUTNIK 1958 EXPLORER 1961 VOSTOK 1962 MERCURY 1964 RANGER 196
1. MERCURY 2. VENUS 3. EARTH 4. MARS 5. JUPITER 6. SATURN 7. URANUS 8. NEPTUN
Vexed Buzz quietly watched Neil jumping to mark the surface. Vexed Buzz quie

PROXIMA NOVA EXTRA CONDENSED BOLD

1957 SPUTNIK 1958 EXPLORER 1961 VOSTOK 1962 MERCURY 1964 RANGER 1
1. MERCURY 2. VENUS 3. EARTH 4. MARS 5. JUPITER 6. SATURN 7. URANUS 8. NEP
Vexed Buzz quietly watched Neil jumping to mark the surface. Vexed Buzz q

PROXIMA NOVA EXTRA CONDENSED EXTRABOLD

1957 SPUTNIK 1958 EXPLORER 1961 VOSTOK 1962 MERCURY 1964 RANG
1. MERCURY 2. VENUS 3. EARTH 4. MARS 5. JUPITER 6. SATURN 7. URANUS 8.
Vexed Buzz quietly watched Neil jumping to mark the surface. Vexed Bu

PROXIMA NOVA EXTRA CONDENSED BLACK

1957 SPUTNIK 1958 EXPLORER 1961 VOSTOK 1962 MERCURY 1964 RA
1. MERCURY 2. VENUS 3. EARTH 4. MARS 5. JUPITER 6. SATURN 7. URANUS
Vexed Buzz quietly watched Neil jumping to mark the surface. Vexed

Proxima Nova Display Sample Summary

PROXIMA NOVA EXTRA CONDENSED THIN ITALIC

1957 SPUTNIK 1958 EXPLORER 1961 VOSTOK 1962 MERCURY 1964 RANGER 1965 GEMINI 1966
1. MERCURY 2. VENUS 3. EARTH 4. MARS 5. JUPITER 6. SATURN 7. URANUS 8. NEPTUNE 9. PLUTO?
Vexed Buzz quietly watched Neil jumping to mark the surface. Vexed Buzz quietly watche

PROXIMA NOVA EXTRA CONDENSED LIGHT ITALIC

1957 SPUTNIK 1958 EXPLORER 1961 VOSTOK 1962 MERCURY 1964 RANGER 1965 GEMINI
1. MERCURY 2. VENUS 3. EARTH 4. MARS 5. JUPITER 6. SATURN 7. URANUS 8. NEPTUNE 9. PLU
Vexed Buzz quietly watched Neil jumping to mark the surface. Vexed Buzz quietly wat

PROXIMA NOVA EXTRA CONDENSED REGULAR ITALIC

1957 SPUTNIK 1958 EXPLORER 1961 VOSTOK 1962 MERCURY 1964 RANGER 1965 GEM
1. MERCURY 2. VENUS 3. EARTH 4. MARS 5. JUPITER 6. SATURN 7. URANUS 8. NEPTUNE 9.
Vexed Buzz quietly watched Neil jumping to mark the surface. Vexed Buzz quietly

PROXIMA NOVA EXTRA CONDENSED MEDIUM ITALIC

1957 SPUTNIK 1958 EXPLORER 1961 VOSTOK 1962 MERCURY 1964 RANGER 1965 G
1. MERCURY 2. VENUS 3. EARTH 4. MARS 5. JUPITER 6. SATURN 7. URANUS 8. NEPTUNE 9
Vexed Buzz quietly watched Neil jumping to mark the surface. Vexed Buzz quietl

PROXIMA NOVA EXTRA CONDENSED SEMIBOLD ITALIC

1957 SPUTNIK 1958 EXPLORER 1961 VOSTOK 1962 MERCURY 1964 RANGER 196
1. MERCURY 2. VENUS 3. EARTH 4. MARS 5. JUPITER 6. SATURN 7. URANUS 8. NEPTUN
Vexed Buzz quietly watched Neil jumping to mark the surface. Vexed Buzz quie

PROXIMA NOVA EXTRA CONDENSED BOLD ITALIC

1957 SPUTNIK 1958 EXPLORER 1961 VOSTOK 1962 MERCURY 1964 RANGER
1. MERCURY 2. VENUS 3. EARTH 4. MARS 5. JUPITER 6. SATURN 7. URANUS 8. NEP
Vexed Buzz quietly watched Neil jumping to mark the surface. Vexed Buzz q

PROXIMA NOVA EXTRA CONDENSED EXTRABOLD ITALIC

1957 SPUTNIK 1958 EXPLORER 1961 VOSTOK 1962 MERCURY 1964 RANG
1. MERCURY 2. VENUS 3. EARTH 4. MARS 5. JUPITER 6. SATURN 7. URANUS 8.
Vexed Buzz quietly watched Neil jumping to mark the surface. Vexed Bu

PROXIMA NOVA EXTRA CONDENSED BLACK ITALIC

1957 SPUTNIK 1958 EXPLORER 1961 VOSTOK 1962 MERCURY 1964 R
1. MERCURY 2. VENUS 3. EARTH 4. MARS 5. JUPITER 6. SATURN 7. URANUS
Vexed Buzz quietly watched Neil jumping to mark the surface. Vexed

Proxima Nova OpenType Support & Usage Notes

OPENTYPE FEATURES SUPPORTED

Small Caps from Lowercase, All Small Caps, Standard Ligatures, Stylistic Alternates, Case-Sensitive Forms, Class-Based Kerning, Proportional Lining Figures, Tabular Lining Figures, Proportional Oldstyle Figures, Tabular Oldstyle Figures, Slashed Zero, Fractions, Ordinals, Superscript, and Scientific Inferior.

NOTE: Access to OpenType features requires application and/or operating system OpenType support.

ALTERNATE CHARACTER ACCESS

There are nine Stylistic Sets, providing flexible access to alternate characters in Proxima Nova:

	Roman	Italic
Set 1 (“Primer” Set)	a l y → a l y	<i>l y → l y</i>
Set 2 (“Futura” Set)	G a → G a	<i>G → G</i>
Set 3 (Alternate “G”)	G → G	<i>G → G</i>
Set 4 (Alternate roman “a”)	a → a	<i>a → a*</i>
Set 5 (Alternate italic “a”)	a → a*	<i>a → a</i>
Set 6 (Alternate “l”)	l → l	<i>l → l</i>
Set 7 (Alternate “y”)	y → y	<i>y → y</i>
Set 8 (Prime and double prime)	' " → ' "	<i>' " → ' "</i>
Set 9 (Serifed tabular figure 1)	1 → 1	<i>1 → 1</i>

* NO CHANGE

In programs that support Stylistic Sets, more than one Set may be applied at a time. For example, Stylistic Set 1 (the “Primer” Set) could be recreated by applying Sets 4, 6, and 7 all at once.

Note that Stylistic Sets 4 and 5 affect roman and italic differently. If you prefer to have a two-story lowercase “a” in italic as well as roman, apply Set 5. The roman “a” will retain its normal two-story design because Set 5 has no effect on the roman. Similarly, if you prefer to have a one-story “a” in both roman and italic, apply Set 4 instead, which changes the roman but not the italic.

STYLISTIC MAPPING (PLAIN, ITALIC, BOLD, BOLD ITALIC)

In Microsoft Office and other Windows applications, Proxima Nova is broken into smaller “sub-families” that work with the *I* (italic) and *B* (bold) buttons on toolbars.

Only the first member of each group appears in the font listing in such applications and is the “plain” style within that group. The others are “italic,” “bold,” and “bold italic” respectively:

GROUP 1: Thin, Thin Italic

GROUP 2: Light, Light Italic

GROUP 3: Regular, Regular Italic, Bold, Bold Italic

GROUP 4: Medium, Medium Italic

GROUP 5: Semibold, Semibold Italic

GROUP 6: Extrabold, Extrabold Italic

GROUP 7: Black, Black Italic

For example, to use Proxima Nova Bold Italic, choose Proxima Nova Regular from the font list and then click the *I* and *B* buttons on the toolbar (or use the keyboard shortcuts). Note: The “bold” button only works with the Regular style. The “italic” button works with all styles.

Stylistic mapping is the same for Condensed and Extra Condensed. Not all applications support stylistic mapping. Use of stylistic mapping is optional and not necessarily recommended for some pre-press workflows.

Proxima Nova Supplemental Fonts

HOW TO INSTALL THE SUPPLEMENTAL FONTS

The Proxima Nova supplemental fonts are installed the same way as any other fonts and may be installed alongside the standard version of Proxima Nova.

FONT NAMES

In applications that group fonts according to family, the standard Proxima Nova fonts will be in one group, the Small Caps and Old Style fonts in a second group, and the Alternate Character fonts in a third group. (Condensed and Extra Condensed are also grouped separately.)

The font names follow a consistent pattern to make it easy to find the font you need. For example:

SOME OF THE STANDARD FONTS:

Proxima Nova Regular
Proxima Nova Bold
Proxima Nova Condensed Thin Italic
Proxima Nova Extra Condensed Black

THE MATCHING SMALL CAP & OLD STYLE FIGURES FONTS:

Proxima Nova ScOsf Regular
Proxima Nova ScOsf Bold
Proxima Nova ScOsf Condensed Thin Italic
Proxima Nova ScOsf Extra Condensed Black

THE MATCHING ALTERNATE CHARACTER FONTS:

Proxima Nova Alt Regular
Proxima Nova Alt Bold
Proxima Nova Alt Condensed Thin Italic
Proxima Nova Alt Extra Condensed Black

Note: In some applications (MS Word, QuarkXPress, most Windows applications), the font names may be abbreviated.

USING THE FONTS

In general, use these the same way you would use any other separate fonts together. That is, select the text you wish to change and choose the font from the font menu.