



Henriette's

OpenType **Features**

Figures

Proportional Lining

123650 Ig | 1|2|3|6|5|0|

Tabular Lining

Proportional Non-Lining

123650 Ig | 1|2|3|6|5|0|

Tabular Non-Lining

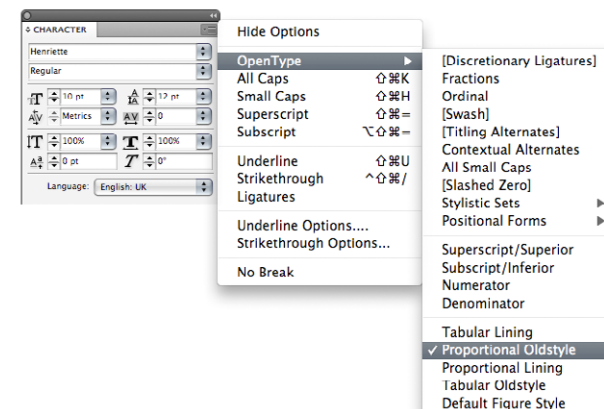
Superiors, Inferiors and Fractions

Superior⁸⁹⁷ Inferior₄₂₆

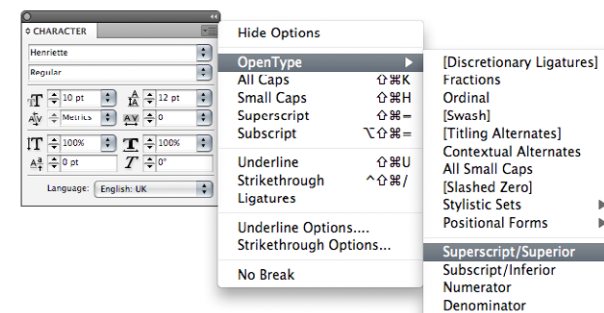
5 1/2 → 5½

1873/6590 → 1873¹/₆₅₉₀

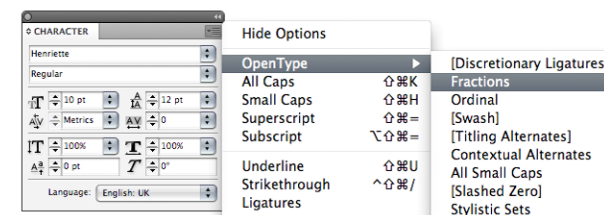
To switch between Henriette's **four Figure Styles** go to *OpenType* in the options menu of your type palette and choose between *Proportional Lining*, *Proportional Oldstyle*, *Tabular Lining*, and *Tabular Oldstyle*.



To use real **Superscript** or **Subscript** go to *OpenType* in the options menu of your type palette and pick *Superscript/Superior*, or *Subscript/Inferior*.



To use **Fractions** go to *OpenType* in the options menu of your type palette and pick *Fractions*. Standard fractions are automatically nut-fractions. If you don't like them, deactivate ligatures.



Swash Caps

Some of Henriette's Italic Swash Caps

Montag → **Monday**

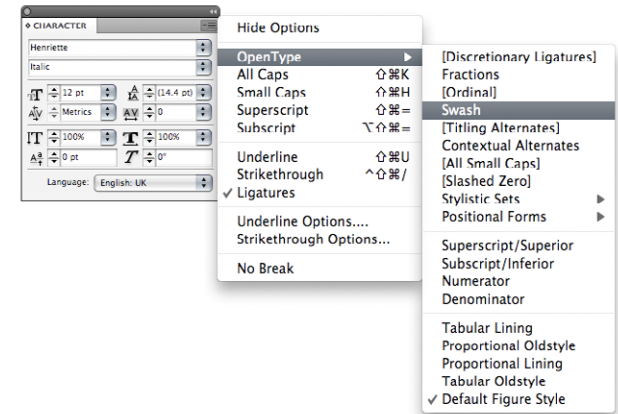
The End? → **The &nd!**

Oh, Good → **Oh, Great**

Nice → **Naughty**

Rick Alt → **Rich Akt**

To use Henriette's fancy **Swash Caps** you need to go to *OpenType* in the options menu of your type palette and choose *Swash*.



Henriette's Swash characters

A B C D & F G H J J K L M
N O P Q R S T U V W X Y Z

Ligatures & Substitutions

Some Ligatures

flight film → flight film

fördern → fördern

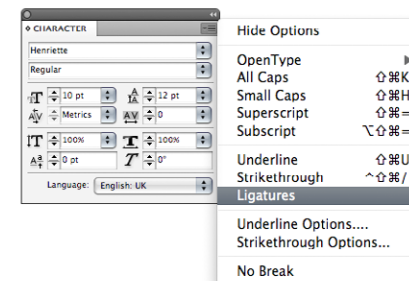
Theodor → Theodor

Contextual Alternates

No.1 / No. 1 → N^o1

16_x3=48 → 16_×3=48

To turn on/off
**Ligatures and
Substitutions** activate/
deactivate *Ligatures*
in the Options menu
of your type palette.



Cross-Style Mix of Henriette's ligatures

ffl fj fh fk fk fi fö fü fë
ffb ffh ffi ffk ffl Th

Small Caps

Henriette Bold

15., Gaußplatz?

Henriette Bold Small Caps

15., GAUSSPLATZ!

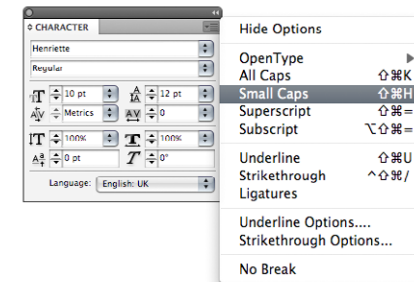
Henriette Bold All Small Caps

15., GAUSSPLATZ!

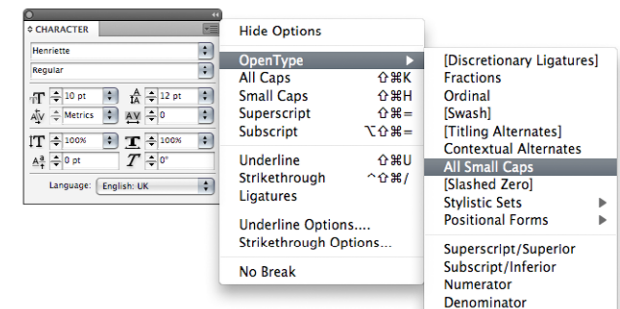
Henriette also includes the capital form of the ß – as well as the small caps version, as seen below. It is your decision, whether to use it or not.

15., GAUßPLATZ!

To use the **Small Caps** feature in InDesign, you need to go to the options menu of your type palette and pick *Small Caps*.



To use **All Small Caps**, go to OpenType in the options menu of your type palette and pick *All Small Caps*.

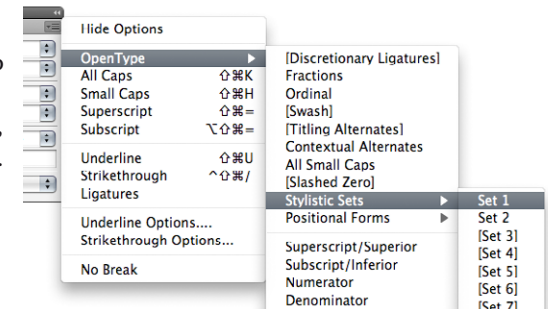


Stylistic Sets

Set 1: Alternative t

Butter → Butter

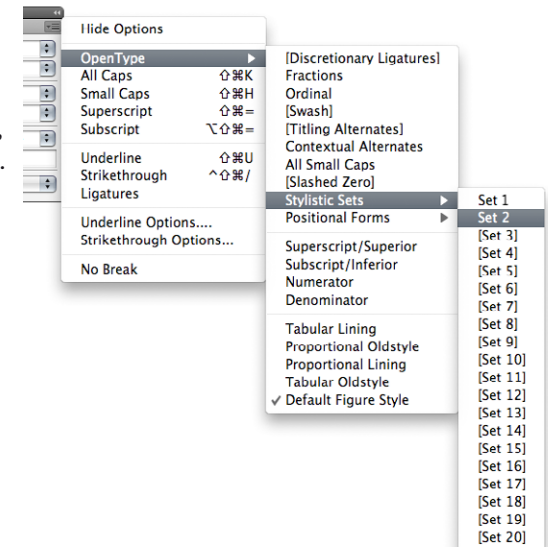
To use the **Alternative lowercase t** you need to go to *OpenType* in the options menu of your type palette, pick *Stylistic Sets* and *Set 1*.



Set 1: Alternative Figures

34 → 34

To use the **Alternative figures** you need to go to *OpenType* in the options menu of your type palette, pick *Stylistic Sets* and *Set 2*.



Circled Numbers & Arrows

Circled numbers can be build with the following shortcuts

((8)) → **⑧**

((10)) → **⑩**

{{5}} → **⑤**

Arrows can be build with the following shortcuts

<# <#> → **← ↔**

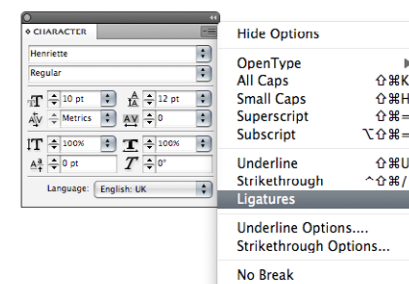
#> ##> → **→ →**

The look of the arrows depends of the weight and width you are using.

Henriette's circled numbers



Those features only work if *Ligatures* is activated in the Options menu of your type palette. However, you can alternatively pick the desired glyphs from the **Glyph palette** of your Application. Like the arrows below.



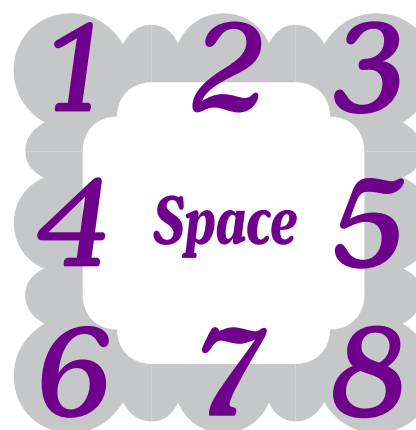
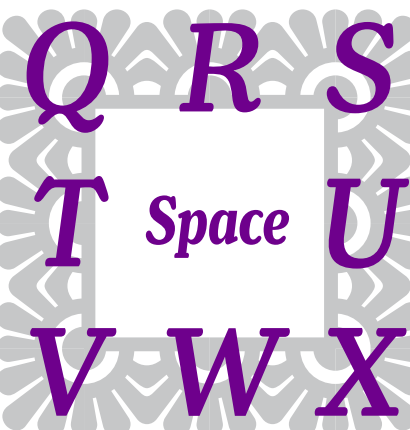
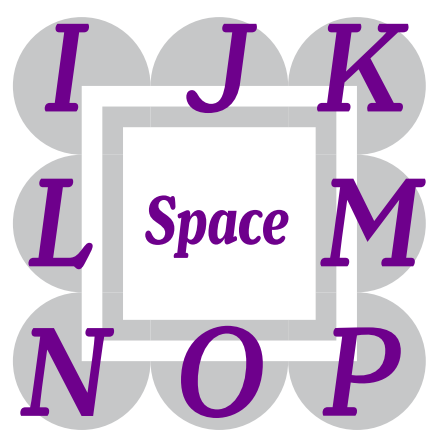
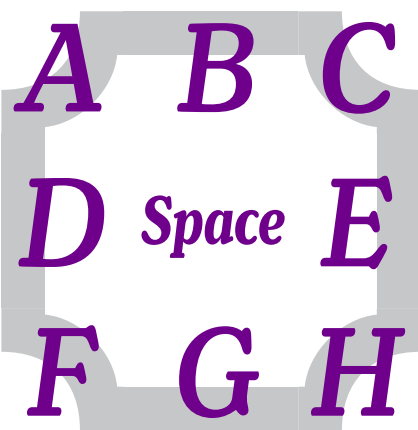
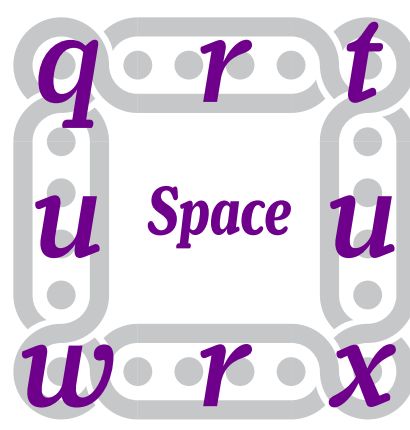
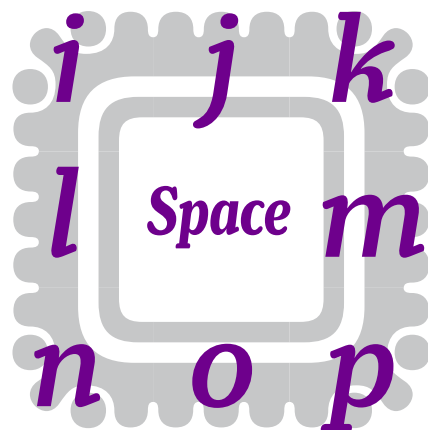
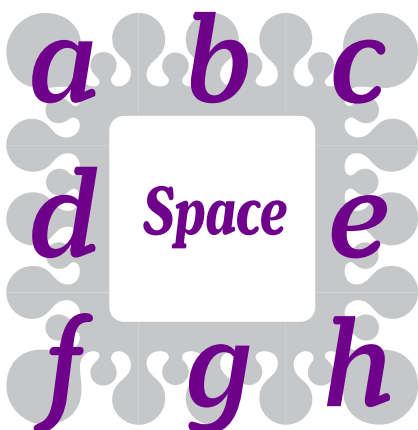
Henriette's arrows



Frames 1/2



It's easy! Choose the Frames Font and press the following buttons to build those frames:

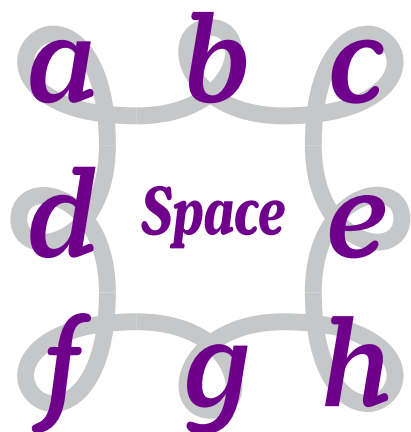


Frames 2/2

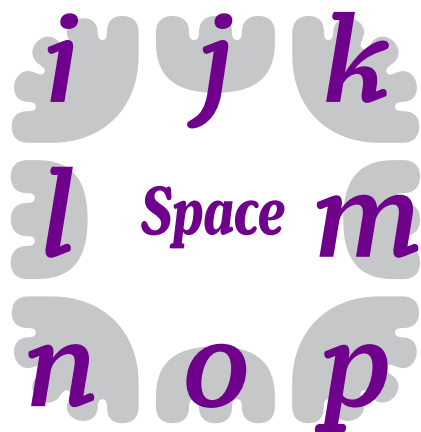


It is important that you have no leading between your lines and your spacing is on Zero!

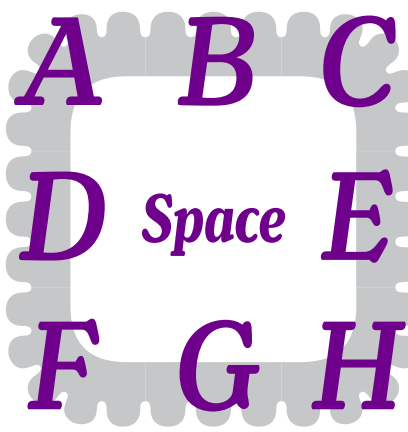
Choose the Frames Font and press the following buttons to build more frames:



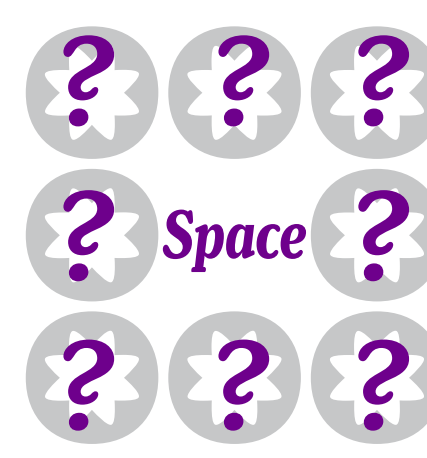
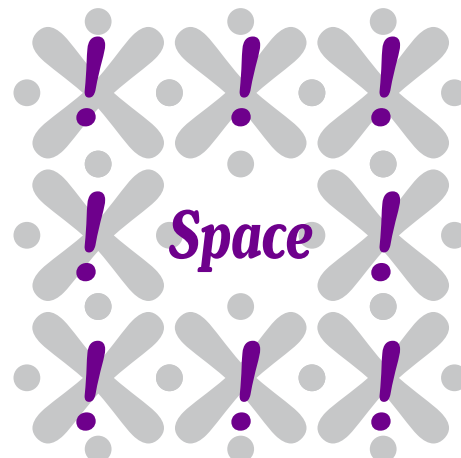
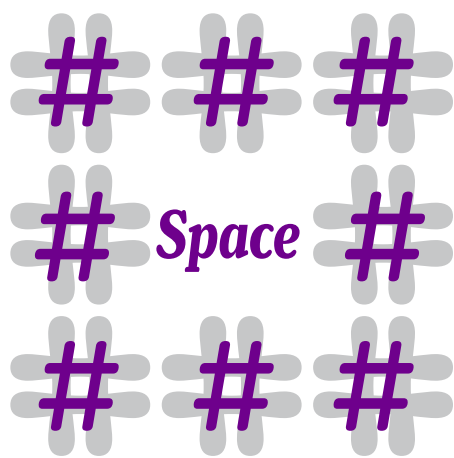
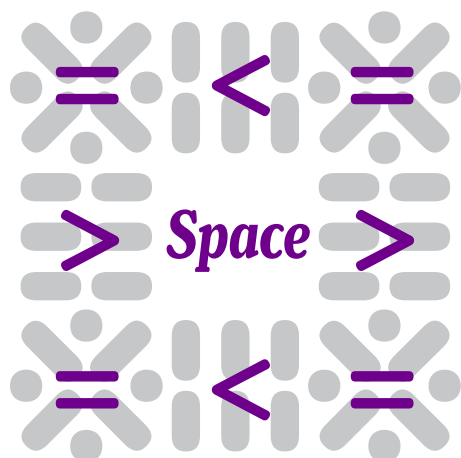
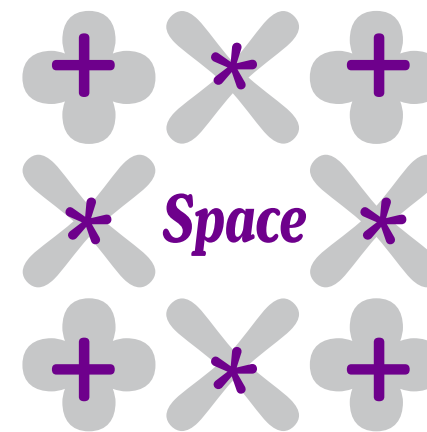
*Change to Stylistic Set 1



*Change to Stylistic Set 1



*Change to Stylistic Set 1





Typejockeys

More information on Henriette at
www.typejockeys.com

