

How to use Desire in Corel.

Install Desire font

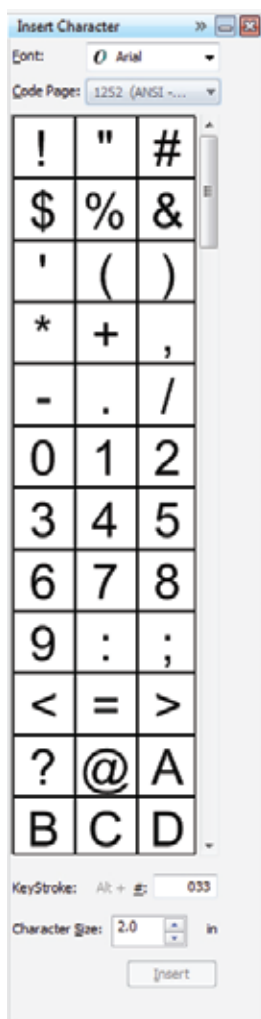
Step 1 - Go to TEXT> INSERT SYMBOL CHARACTER or hit Ctrl-F11

Step 2 - On the "Insert Character" box, change the font to "Desire"

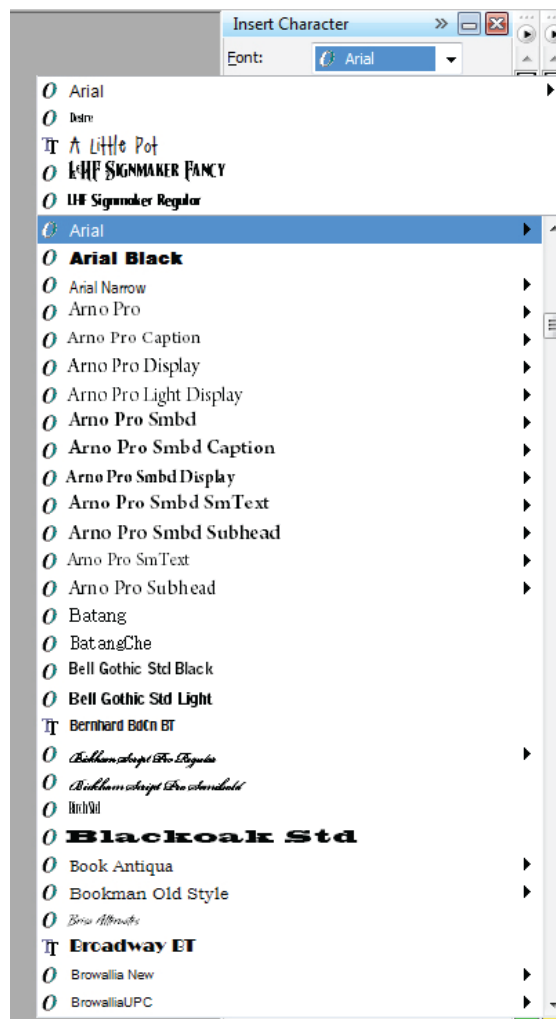
Step 3 - On the "Insert character" box, change "Code page" to "All characters"

Step 4 - Click the Text tool and place a cursor in your work area

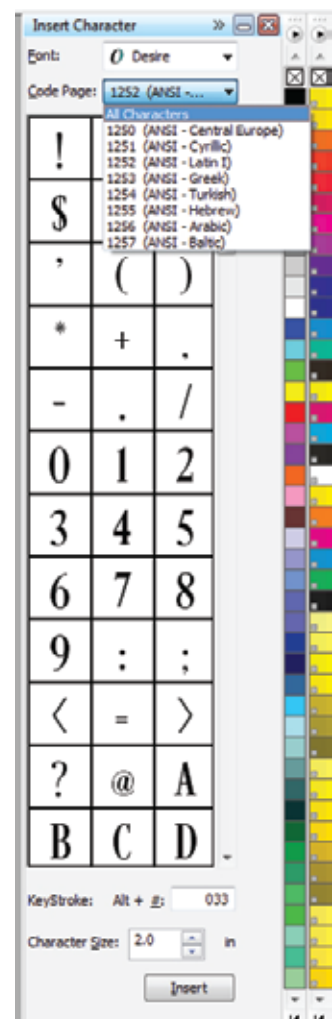
Step 5 - In the "insert character" box, select the character you'd like to use and insert it into your cursor text by double-clicking the character or clicking the "Insert" button.



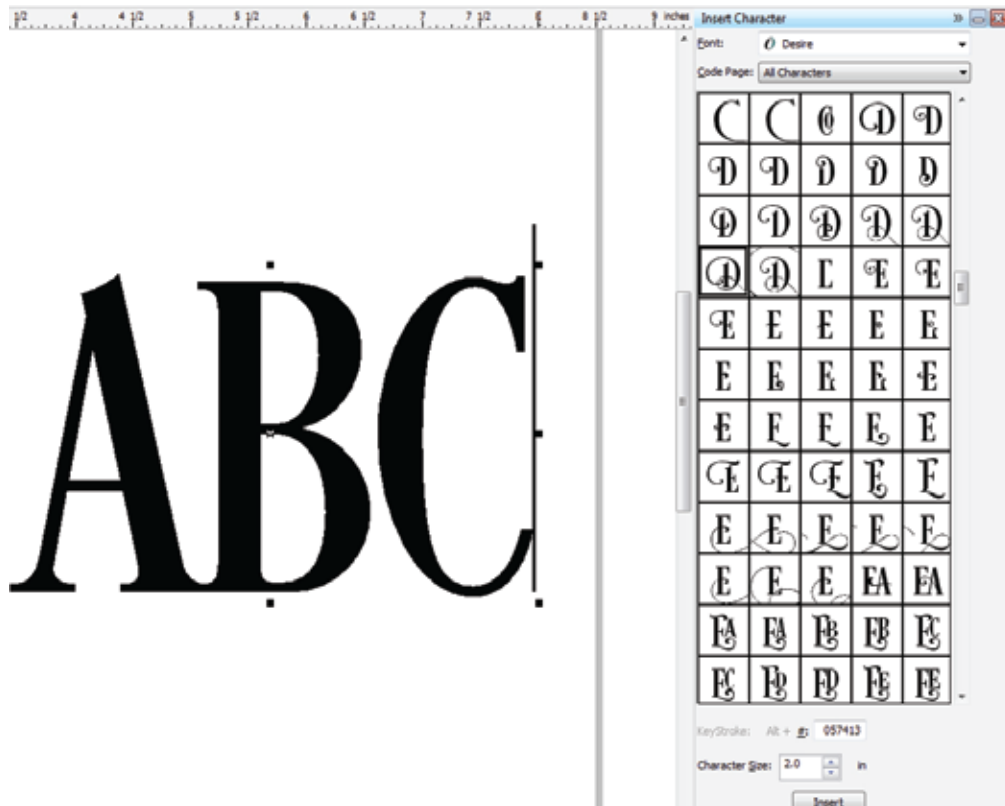
Step 1.



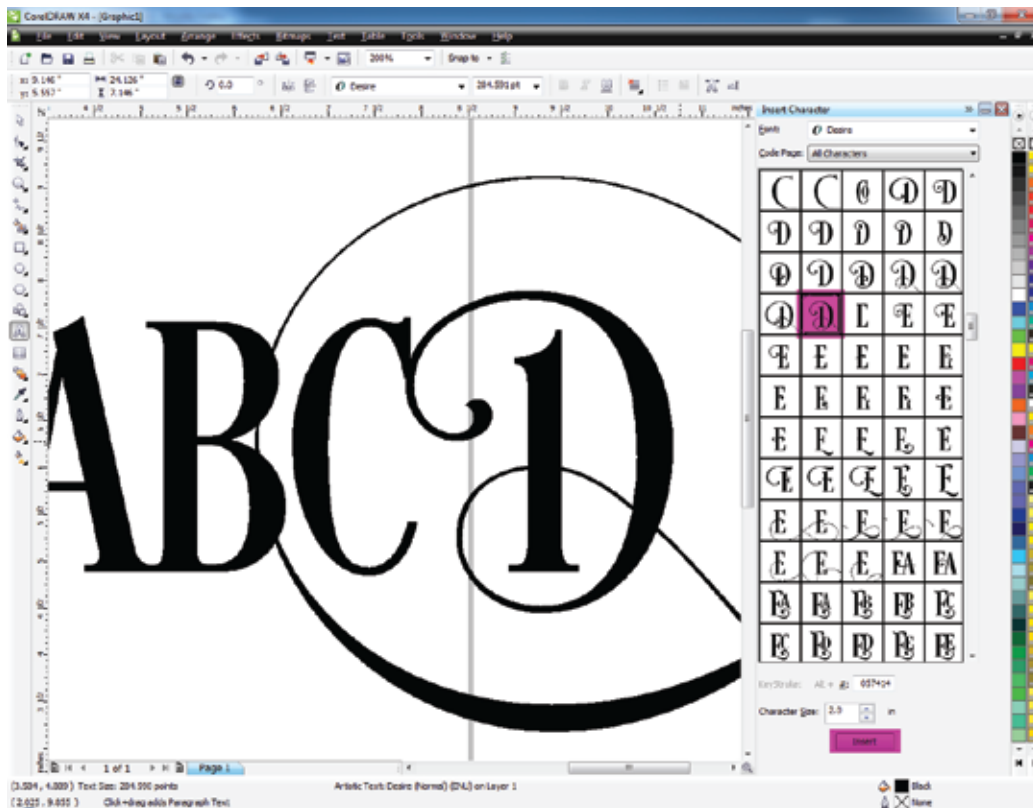
Step 2.



Step 3.



Step 4.



Step 5.

