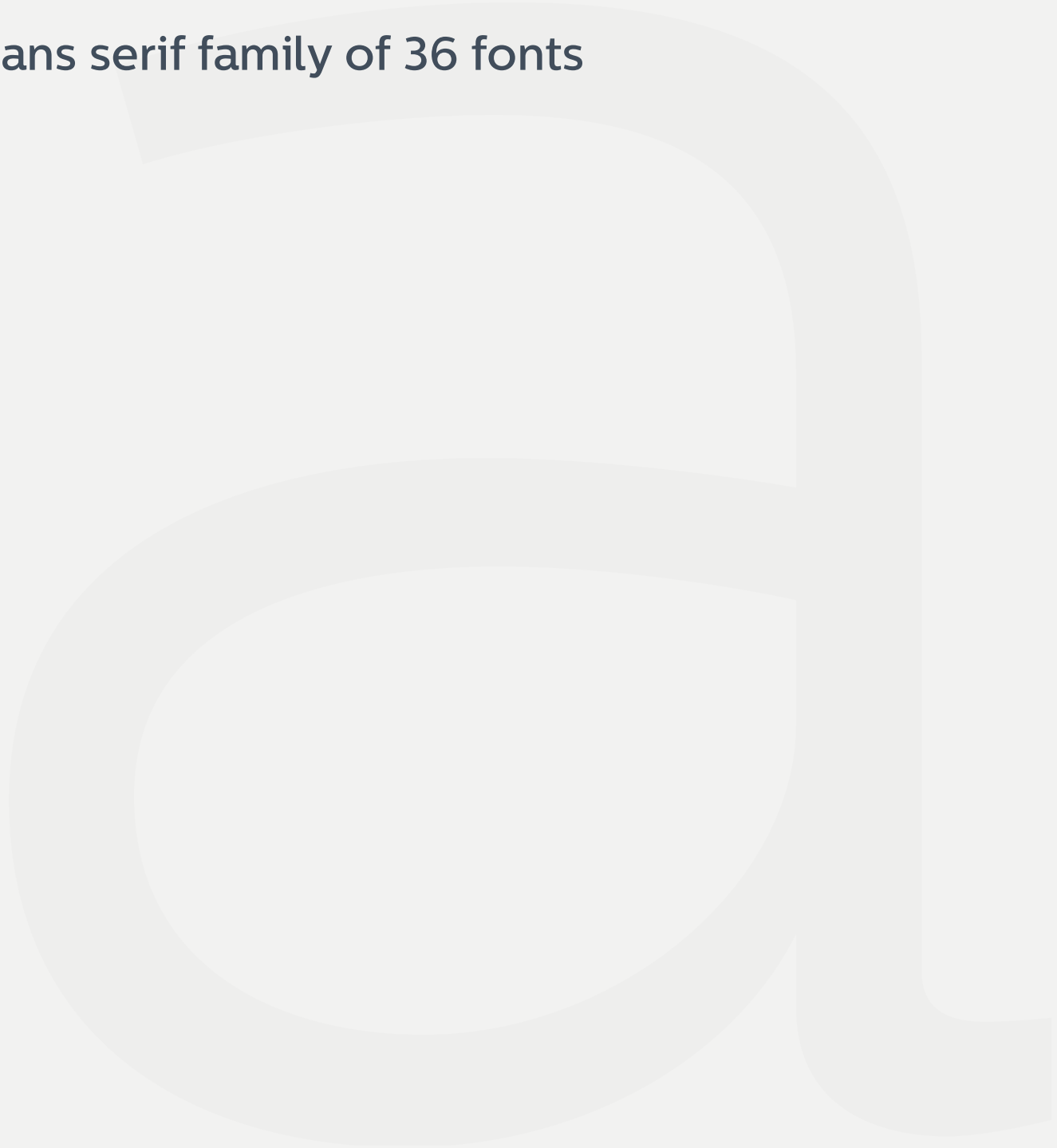


Centrale Sans

sans serif family of 36 fonts



colaboration

Condensed Medium

HAMBURGEVONS

Regular

oerspiciatis unte

Condensed Thin

AVALANCHE

Regular

€22.500.123

Bold

rear derailleur

Light

VERSCHLIEßBARE

Thin

ABOUT CENTRALE SANS

Centrale Sans is a modern sans-serif typeface humanist typeface. It is characterized with quite large x-height and big apertures. With this update Centrale Sans is a family of 36 fonts - 9 different weights + their matching italics + a new condensed width.

Except the new width and the new Hairline and ExtraBold weights a range of revisions were made. The italics were redesigned from scratch as well as numerals, punctuation, diacritics and spacing.

The condensed width was designed as a stand alone typeface with the family characteristics in mind. It is 15% narrower than the normal one which makes it precious space saving tool.



The most obvious updates in Centrale Sans are made to the italics. Some of them shown here, the overall oval handling was improved which can be seen in u,e,o,n.



FAMILY

UPRIGHT

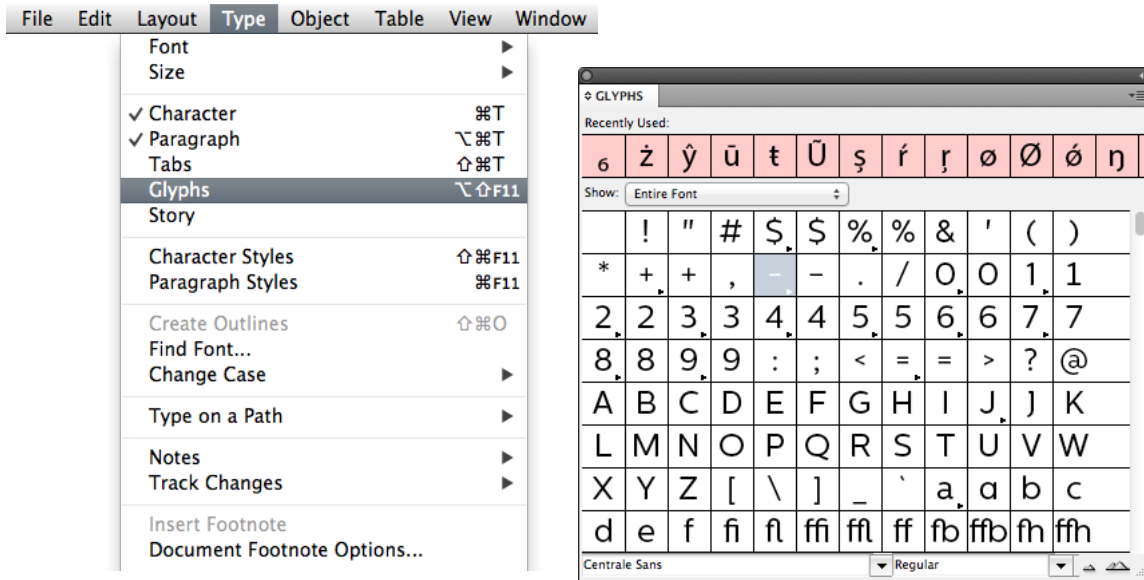
Centrale Sans Hairline	123 Hamburgfontsv
Centrale Sans XThin	123 Hamburgfontsv
Centrale Sans Thin	123 Hamburgfontsv
Centrale Sans XLight	123 Hamburgfontsv
Centrale Sans Light	123 Hamburgfontsv
Centrale Sans Regular	123 Hamburgfontsv
Centrale Sans Medium	123 Hamburgfontsv
Centrale Sans Bold	123 Hamburgfontsv
Centrale Sans XBold	123 Hamburgfontsv

ITALIC

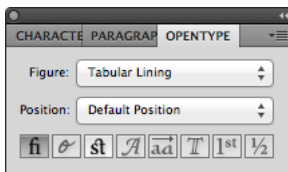
<i>Centrale Sans Hairline</i>	<i>123 Hamburgfontsv</i>
<i>Centrale Sans XThin</i>	<i>123 Hamburgfontsv</i>
<i>Centrale Sans Thin</i>	<i>123 Hamburgfontsv</i>
<i>Centrale Sans XLight</i>	<i>123 Hamburgfontsv</i>
<i>Centrale Sans Light</i>	<i>123 Hamburgfontsv</i>
<i>Centrale Sans Regular</i>	<i>123 Hamburgfontsv</i>
<i>Centrale Sans Medium</i>	<i>123 Hamburgfontsv</i>
<i>Centrale Sans Bold</i>	<i>123 Hamburgfontsv</i>
<i>Centrale Sans XBold</i>	<i>123 Hamburgfontsv</i>

GLYPH PALETTE & OPENTYPE PANEL

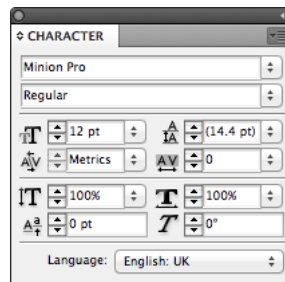
All of the characters included in Centrale Sans can be accessed with the Glyphs Panel in Illustrator and InDesign. This includes all the characters from any opentype type feature included.



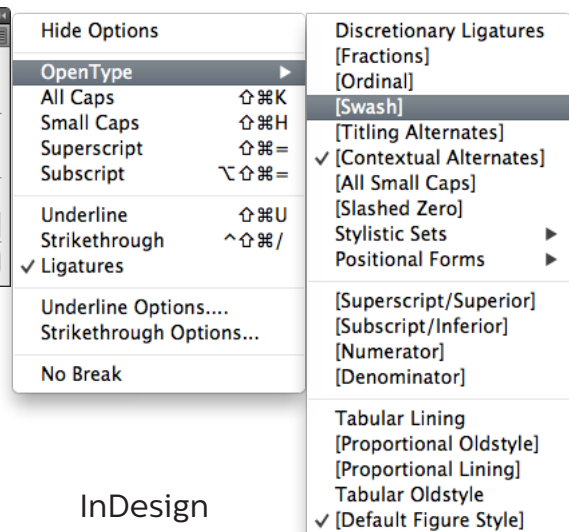
You can access the OpenType features included in this font through the OpenType panels in Illustrator and InDesign. In InDesign this panel can be accessed via Character window and in Illustrator there is a stand alone OpenType window.



Illustrator



InDesign



DISHONORED

Condensed Regular

aromathic choice tobacco

Extra Light

MACHINE DRUM

Extra Bold

official statement

Condensed Medium

the quick brown fox jumps over me

Regular

HERBALISER

Hairline

ceremonies in dark old men

Extra Bold Condensed

ff Standard Ligatures

Confident → Confident

The Standard Ligatures can be selected from the OpenType panels in InDesign, Illustrator and Photoshop or the Glyphs panel in InDesign or Illustrator. In Illustrator and InDesign the Standard ligatures features is activated by default.

fh Discretional Ligatures

Halfback → Halfback

The Discretional Ligatures feature is not activated by default, It can be selected from the OpenType Panel.

13 Tabular Lining

0123456789 → 0123456789

The Tabular Lining feature, lines up the numerals horizontally and vertically. It is very handy to easy arrange tables in columns. Cannot be accessed from Photoshop, works only in InDesign and Illustrator, it can be activated from the OpenType panel.

aa Stylistic Set #1

Calatrava → Calatrava

gg Stylistic Set #2

Zigzagging → Zigzagging

jj Stylistic Set #3

Jorjano → Jorjano

ee Stylistic Set #3*

Clearing → *Clearing*



*The third stylistic set in italics is set for the alternative 'e' glyph. The change is needed as there is no 'g' alternative for the italics.

For all of you who own Centrale Sans before this update, the 'J' and 'j' glyphs are new, as the old ones can now be found as Stylistic Set 3 in roman and Stylistic Set 2 in Italic.

SUPPORTED LANGUAGES

Afrikaans, Albanian, Italian, Jola-Fonyi, Norwegian Nynorsk,
Asu, Basque, Bemba, Kabuverdianu, Nyankole, Oromo,
Bena, Bosnian, Kalaallisut, Polish, Portuguese,
Chiga, Congo Swahili, Kalenjin, Kamba, Romanian, Romansh,
Cornish, Croatian, Kikuyu, Kinyarwanda, Rombo, Rundi,
Czech, Danish, Dutch, Latvian, Lithuanian, Rwa, Samburu,
Embu, English, Luo, Luyia, Sango, Sangu, Sena,
Esperanto, Estonian, Machame, Shambala, Shona,
Faroese, Makhuwa-Meetto, Slovak, Slovenian,
Filipino, Makonde, Malagasy, Soga, Somali,
Finnish, French, Malay, Maltese, Spanish,
Galician, Ganda, Manx, Swahili, Swedish,
German, Gusii, Meru, Morisyen, Swiss German, Taita,
Hungarian, Icelandic, North Ndebele, Teso, Turkish, Vunjo,
Indonesian, Irish, Norwegian Bokmål, Welsh, Zulu

německého

regular

professional white spearmint

bold condensed

organic honey

light

TYRELL 006

medium condensed

HOMEMADE BLUEBERRY SYRUP

bold

aesthetic beauty

extra thin

AROMATHERAPY

medium

Thank

You

Centrale Sans

by typedepot - Sofia, Bulgaria
contacts@typedepot.com
www.typedepot.com
