The background features a grid of dark green squares on a lighter green background. The grid is framed by ornate, gold-colored borders with intricate scrollwork and floral patterns. The word 'Sabon' is written in a highly decorative, calligraphic font with a light blue fill and a dark blue outline. The letters are thick and have elaborate flourishes, including a large, sweeping 'S' and a long, trailing tail on the 'n'.

Sabon

This brochure shows only a partial sample of the entire font. To see all resources of this font use the "glyph pallette" to find the exact combination and style of letters you want. Because the great number of programed combinations of "Contextual Alternates" we recommends you turn on-off-on the Open Type features to see all the possibilities when to build words and sentences.

Sabor is a voluptuous upright connected display font with mixed taste of script fonts. There was many inspirations for Sabor, but all starts with a book from 1950's about the battles of II War. To that first sketches of a naive dense display typeface we, day by day, start to create a mixed style involving some lettering concepts from 1950"s, some calligraphy notions and the first display ideas. The feeling of this font is good to be used in many artworks, like logos, packaging, party invitations, layouts for t-shirts, magazine headings, and much more, since websites to and all kind of printed jobs.

That font is not really a script, but, like the scripts we strongly recommends to use the caps only in the begining of words and sentences, to contrast with the lower cases : it's not designed for all-caps settings, so avoid that kind of use.

This font has almost 700 glyphs and supports the most important Latin-based languages. We works hard in a tour-de-force kerning: over 12.000 kerning pairs soft adjusted handly. Its OpenType features include final forms, initial forms, special sets (upper and lowercases), hundreds of contextual alternates ligatures providing letterform variations and concetions that make your

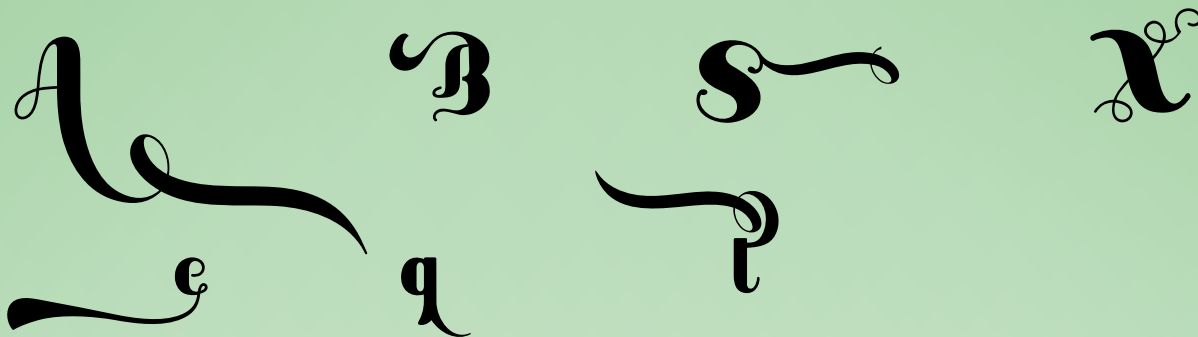
designs really special, and ornaments (tails).

Because of its high number of alternate letters and combinations, we suggest the use of the glyph palette to find ideal solutions to specific designs. The sample illustrations will give you an idea of the possibilities. You have full access to this amazing stuff using InDesign, Illustrator, QuarkXpress and similar software. However, we still recommend exploring what this font has to offer using the glyphs palette: principally to get all the power of the Contextual Alternates feature. You can get an idea of the power of this font looking at the "Sabor User Guide", a pdf brochure in the Gallery section.

Also available two sister fonts easy to use : Sabor Words and Sabor Rasgos Escritura

Sabor has original letters designed by Iza W and overall creative direction plus core programming by Paulo W.

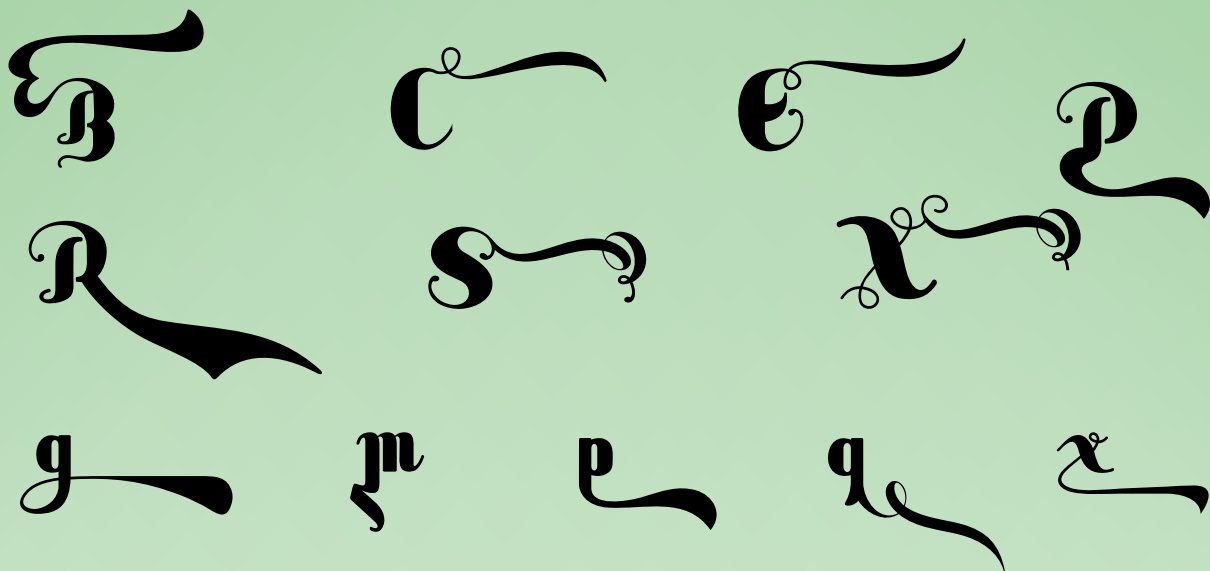
STYLISTIC SET 01



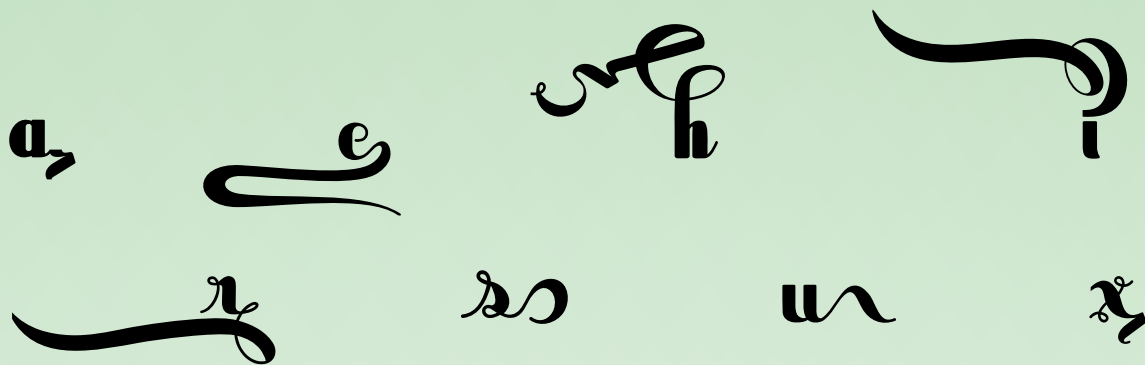
STYLISTIC SET 02, 03, 04 and 05



INITIAL FORMS



FINAL FORMS



CONTEXTUAL ALTERNATES

---

Bored Bohemian Bill  
Preface Park & Video Anu  
Unas Games Cinema  
Quest Notes Cen Vo

did dense dog data

arab az ar ark ax

re park made bus oo

nomad vv ua gua gas

fem feminine fit ff

ORNAMENTS



Aphrodisiac

mystic

wine

Você

Silver

abrir

Price

Eat

Rough

great

doux

Beso

Querida,

agua

job

Love



Aphrodisiac

mystic

wine

Você

Silver

fabry

Price

Eat

Rough

great

doux

Best

Queida,

agua,

job

Love

● Stylistic Set 01

● Initial Forms

● Final Forms

● Regular

● Contextual Alternates

● Stylistic Set 02

● Small Capitals

● Stylistic Set 05

Life  
mind





Dr  
Sabon