

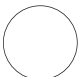





PIXymbols™ Acircle

ALPHABETIC & NUMERIC SYMBOLS IN CIRCLES

UNSHIFTED

	1	2	3	4	5	6	7	8	9	0		
'	1	2	3	4	5	6	7	8	9	0	-	=
1	2	3	4	5	6	7	8	9	10			
q	w	e	r	t	y	u	i	o	p	[]	\
	11	12	13	14	15	16	17	18	19	20		
	a	s	d	f	g	h	j	k	l	;	'	
		21	31	41	51	61	71	81	91	0		
		z	x	c	v	b	n	m	,	.	/	

SHIFT

												
~	!	@	#	\$	%	^	&	*	()	_	+
Q	W	E	R	T	Y	U	I	O	P			
Q	W	E	R	T	Y	U	I	O	P	{	}	
	A	S	D	F	G	H	J	K	L			
	A	S	D	F	G	H	J	K	L	:	"	
		Z	X	C	V	B	N	M				
		Z	X	C	V	B	N	M	<	>	?	

HOW TO USE: Border circles in six line weights are accessed with key codes Shift 1 through Shift 6. Whith type size set at 10 points, the line weights will be as follows, respectively: 0.1, 0.2, 0.3, 0.4, 0.5, and 0.6 points.

NUMBERS: To generate numbers in a circle, always start by pressing / slash, then the numeral(s), and conclude by pressing Shift 1 through Shift 6, depending on desired border weight. The circle will align automatically.

To insure proper spacing for numbers 0 through 21, 31, 41, 51, 61, 71, 81, and 91, these are generated by pressing slash, then the appropriate number, in

unshifted mode, then the border. All other numbers are created by pressing the number keys, after pressing / LETTERS: Press slash, then the letter, then the border.

EXAMPLES: NUMBER: Press / slash 4 5 Shift 3
LETTER: Press / slash B Shift 5


For a number or letter in a white circle, within a black square, press] right bracket, instead of the circle keys.



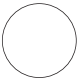
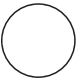
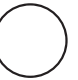



BOLD FONT

The bold font is identical to the Normal version, except that the numerals and letters are bolder. Select Bold in the Font Style (or Format) menu of your application program. Refer to the preceding page for HOW TO USE information.

BOLD UNSHIFTED

	1	2	3	4	5	6	7	8	9	0		
'	1	2	3	4	5	6	7	8	9	0	-	=
1	2	3	4	5	6	7	8	9	10			
q	w	e	r	t	y	u	i	o	p	[]	\
	11	12	13	14	15	16	17	18	19	20		
	a	s	d	f	g	h	j	k	l	;	'	
		21	31	41	51	61	71	81	91	0		
		z	x	c	v	b	n	m	,	.	/	

BOLD SHIFT

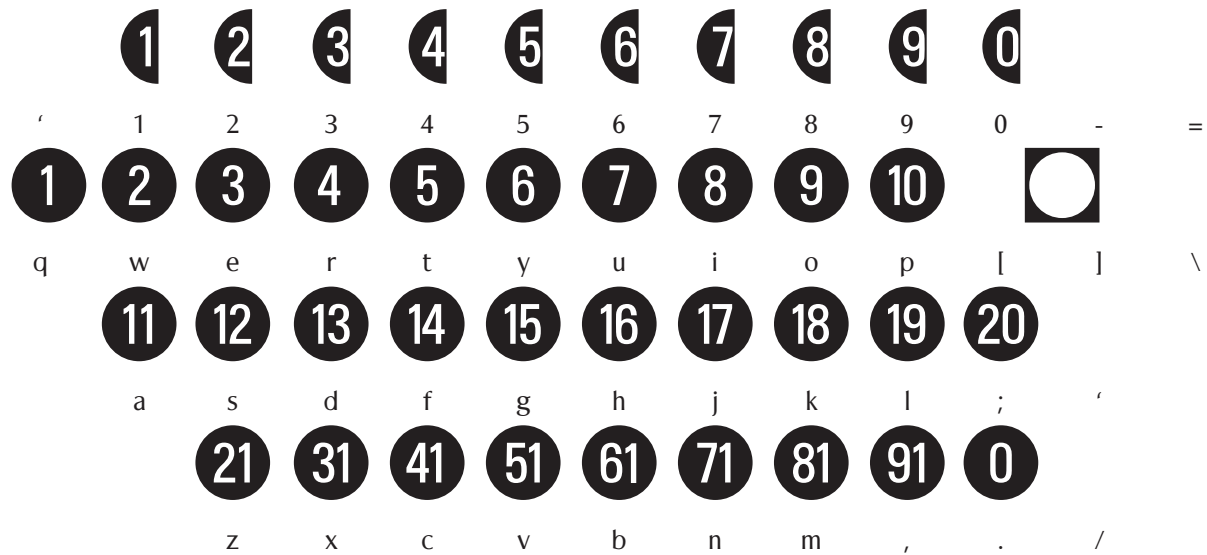
												
~	!	@	#	\$	%	^	&	*	()	_	+
Q	W	E	R	T	Y	U	I	O	P			
Q	W	E	R	T	Y	U	I	O	P	{	}	
	A	S	D	F	G	H	J	K	L			
	A	S	D	F	G	H	J	K	L	:	"	
		Z	X	C	V	B	N	M				
		Z	X	C	V	B	N	M	<	>	?	

SPACERS

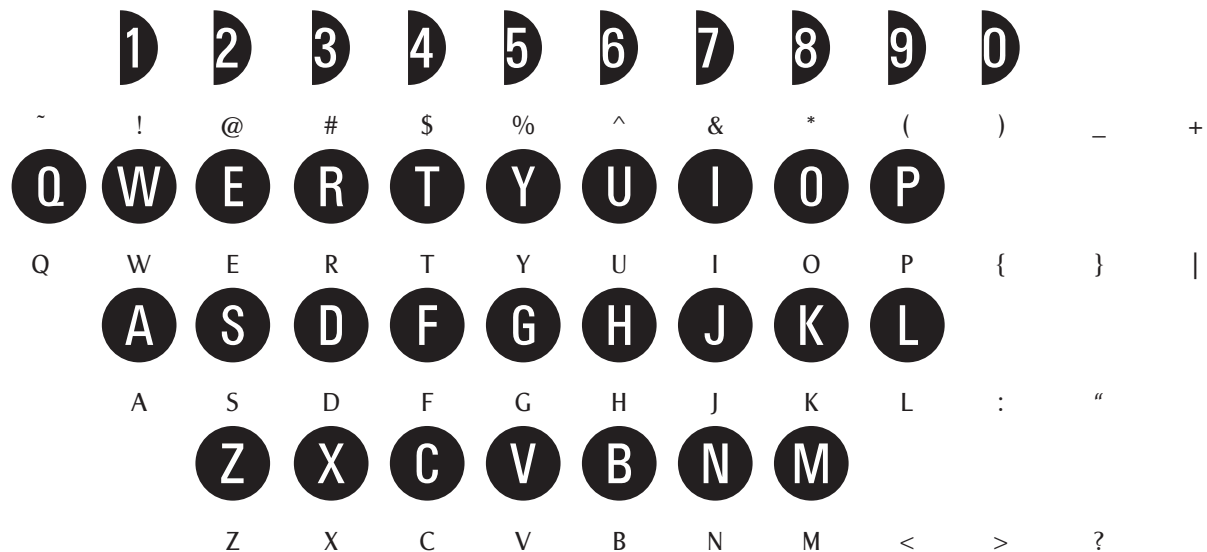
In addition to the slash starting spacer, spacing between characters can be effected in three increments, in both Normal and Bold modes, by pressing the following keys (decimals relate to total type height, type height being 1.0): Spacebar=0.5; minus sign=0.25; equal sign=0.125.



UNSHIFTED



SHIFT



HOW TO USE

NUMBERS: To insure proper spacing for numbers 0 through 21, 31, 41, 51, 61, 71, 81, and 91, these are generated by pressing the appropriate letter-key, in unshifted mode. All other numbers are constructed by pressing the numeral keys for the left half, and Shift & numeral for the right half.

LETTERS: To generate letters, press the desired letter, in shifted mode.

EXAMPLES: NUMBER: Press 4 Shift 5

LETTER: Press B

To create a number or letter in a black square, end by pressing] right bracket. The square will align automatically.

96

96

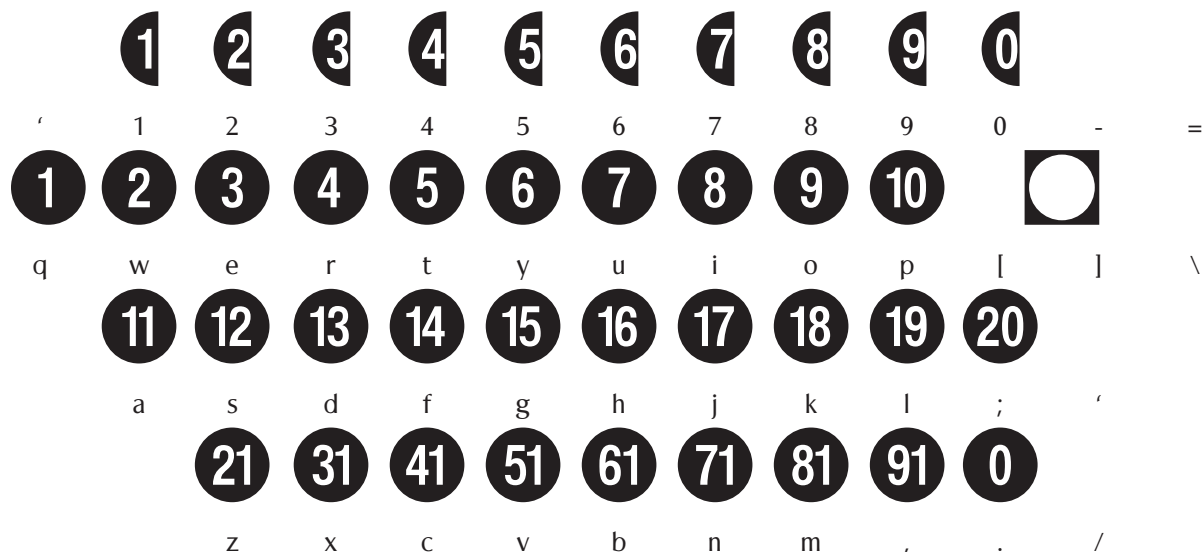
B

B

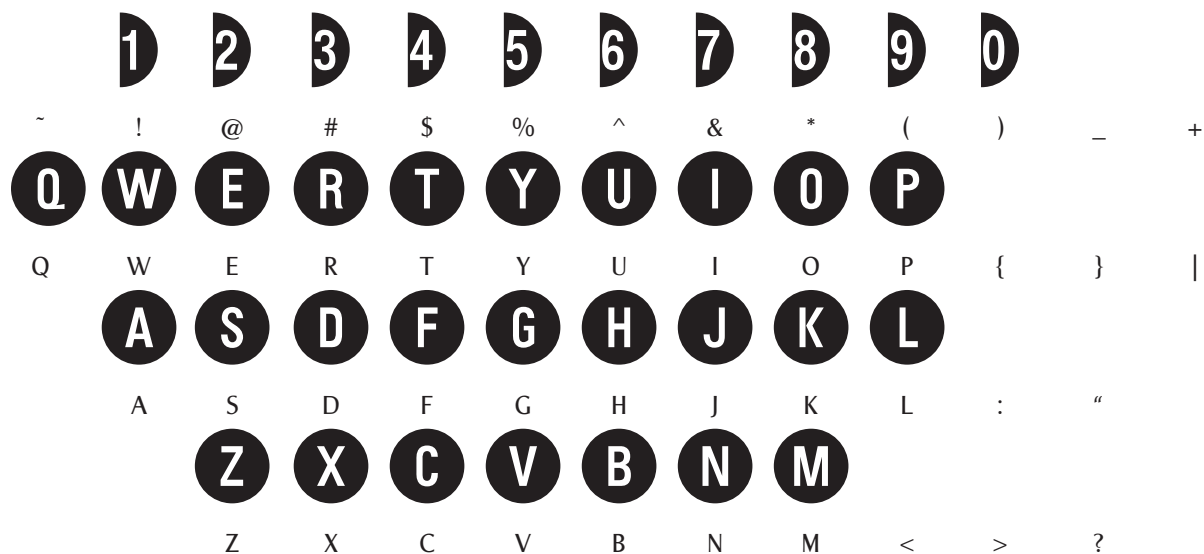
BOLD FONT

The bold font is identical to the Normal version, except that numerals and letters are bolder. Select Bold in the Font Style (or Format) menu of your application program. Refer to the preceding page for HOW TO USE information.

BOLD UNSHIFTED



BOLD SHIFT



SPACERS

Spacing between characters can be effected in three increments, in both Normal and Bold modes, by pressing the following keys (decimals relate to total type height, type height being 1.0): Spacebar=0.5; minus sign=0.25; equal sign=0.125.

