

Waterfall

from TYPE *Set* IT

Experience Waterfall!

The Waterfall Family is a script display face available in several formats and packages. This elegant script features perfect connecting characters and flowing forms. Take an exotic trip through a beautiful wilderness filled with Butterflies, Charms and Dreams.

Use this simple guide to navigate through the experience of Waterfall's cool brilliance. Mix and match, substitute and experiment with the four styles of this beautiful font. Or skip along the trail with the OpenType format and enjoy the ease at which elegance and grace can be achieved with the click of your heels (or your mouse, if you prefer).

Table of Contents

2	Experience Waterfall!
3	Waterfall Pro
4	Waterfall Pro Character Map
5	Font Package Options
6	Waterfall Angel
7	Waterfall Butterfly
8	Waterfall Charm
9	Waterfall Dreams
10	Waterfall Ligatures
11	Samples Using TrueType Fonts
12	Samples <cont>
13	OpenType Features
14	Substituting Fonts
15	Using Waterfall AB
16	Using Waterfall AC
17	Using Waterfall AD
18	Using Waterfall Family
19	Which is OpenType?
20	Answer!
21	Thank You!

Waterfall Pro	
Waterfall Angel	
Waterfall Butterfly	
Waterfall Charm	
Waterfall Dreams	
Waterfall Ligatures	

Waterfall Pro Character Map

This graphic shows the entire character map from FontLab™. Glyphs found in the TrueType styles are highlighted with their corresponding colors.

nodef	Eth	eth	Lash	lash	Scaron	scaron	Yacute	yacute	HT	LF	Thorn	thorn	CR	Zaron	zaron	DLE	DC1	DC2	DC3	DC4	onehalf	onequarter	onesuperior	threequarter	freesuperior	twosuperior
	Ð	ð	Ł	ł	Š	š	Ÿ	ÿ			þ	ƥ		Ž	ž						½	¼	¹	¾	³	²
brokenbar	minus	multiply	RS	US	space	exclam	quotedi	numbersign	dollar	percent	ampersand	quotesingle	parenleft	parenright	asterisk	plus	comma	hyphen	period	slash	zero	one	two	three	four	five
	-	x				!	"	#	\$	%	&	'	()	*	+	,	-	.	/	0	1	2	3	4	5
six	seven	eight	nine	colon	semicolon	less	equal	greater	question	at	A	B	C	D	E	F	G	H	I	J	K	L	M	N	O	P
Q	R	S	T	U	V	W	X	Y	Z	bracketleft	backslash	bracketright	asciicircum	underscore	grave	a	b	c	d	e	f	g	h	i	j	k
Q	R	S	T	U	V	W	X	Y	Z	l	\]	^	_	`	a	b	c	d	e	f	g	h	i	j	k
l	m	n	o	p	q	r	s	t	u	v	w	x	y	z	{		}	-		À	Á	Ç	È	É	Ò	Ó
acute	grave	asciicircum	adieresis	atilde	aring	cedilla	ecacute	egrave	icircumflex	idieresis	iacute	igrave	icircumflex	idieresis	ntilde	ocacute	ograve	ocircumflex	oderesis	otilde	uacute	ugrave	ucircumflex	udieresis	dagger	degree
á	à	â	ã	ä	å	æ	ç	è	é	ê	ë	ì	í	î	ï	ó	ô	õ	ö	ù	ú	û	ü	ÿ	†	°
cent	sterling	section	bullet	paragraph	germandbls	registered	copyright	trademark	acute	dieresis	notequal	AE	Oslash	infinity	pluminus	lessequal	greaterequal	yen	mu	partialdiff	summation	product	pi	integral	ordfeminine	ordmasculine
¢	£	§	•	¶	§	®	©	™	´	¨	≠	Æ	∞	♣	≤	≥	¥	μ	∂	∑	∏	∏	∫	∫	♀	♂
Omega	ae	oslash	questiondown	clamdown	logcandot	radical	florin	approx	Delta	guillemotleft	guillemotright	ellipsis	uni00A0	Agrave	Altide	Otilde	OE	oe	endash	endash	quotedblleft	quotedblright	quotedblleft	quotedblright	divide	lozenge
Ω	æ	ø	¿	¡	¬	√	ƒ	≈	Δ	«	»	…		À	Á	Ë	Æ	œ	-	-	"	"	'	'	÷	◊
yderesis	Yderesis	fraction	Euro	guillemotleft	guillemotright	h	fi	daggerdbl	periodcentered	quotessingl	quotessingl	parohous	Acircumflex	Ecircumflex	Aacute	Edieresis	Egrave	lacute	Icircumflex	Idieresis	Igrave	Oacute	Ocircumflex	apple	Ograve	Uacute
ÿ	Ÿ	/	€	<	>	ſ	fi	‡	⋅	⋅	„	‰	À	Á	È	É	Ê	Ë	Ì	Í	Î	Ï	Ò	Ó	Ù	Ú
Ugrave	Ucircumflex	Udotless	Utilde	Umacron	Ubreve	Udotaccent	ring	cedilla	hungaruml	ogonek	caron	ecute.and	a.1	b.1	b.2	d.2	d.3	d.4	f.1	f.2	279	n.1	L.1	L.2	m.no	
Ù	Û	ü	~	˘	˙	˚	˛	˜	˝	ˆ	ˇ	ˆ	a	b	b	d	d	d	f	f		h	l	l	m	
n.no	n.connect	_298	o.connect	p.1	p.2	p.3	r.1	r.2	s.sup	s.connect	s.end	s.begin	s.up.2	s.wash.left	s.wash.cent	s.wash.right	_332	_424	_436	_444	_497	_498	_562	y.p	uni00A0	currency
n	n	n	o	þ	þ	þ	ʀ	ʀ	ʂ	ʂ	ʂ	ʂ	ʂ	ʂ	ʂ	ʂ	ʂ	ʂ	ʂ	ʂ	ʂ	ʂ	ʂ	ʂ	ʂ	ʂ
Aogonek	_0127	Amacron	amacron	Aogonek	Ccaron	ccaron	Cacute	ccacute	Zacute	zacute	Dcaron	dcaron	Emacron	emacron	Edotaccent	edotaccent	Ecaron	ecaron	Eogonek	eoogonek	uni0123	logonek	logonek	Imacron	imacron	uni0136
Ā	Ā	ā	ā	Ā	Ā	Ā	Ā	Ā	Ā	Ā	Ā	Ā	Ā	Ā	Ā	Ā	Ā	Ā	Ā	Ā	Ā	Ā	Ā	Ā	Ā	Ā
uni0138	uni013C	Lcaron	lcaron	Lacute	lacute	uni0145	uni0146	Nacute	nacute	Ncaron	ncaron	Ohungaruml	ohungaruml	Omacron	omacron	Racute	racute	Rcaron	rcaron	uni0156	uni0157	Sacute	sacute	Tcaron	tcaron	Umacron
Ł	Ł	ł	ł	Ł	Ł	ł	ł	Ń	ń	Ń	ń	Ń	ń	Ń	ń	Ń	ń	Ń	ń	Ń	ń	Ń	ń	Ń	ń	
Umsaron	Uring	uring	Uhungaruml	uhungaruml	Uogonek	uogonek	uni0137	Zdotaccent	zdotaccent	uni0122	uni03A9	Dcroat	dcroat	Abreve	uni0218	uni0219	uni021A	uni021B	Scedilla	scedilla	uni0162	uni0163	Hbar	Hcircumflex	Udotaccent	
ū	Ū	ū	Ū	ū	Ū	ū	Ū	z	z	G	Ω	Đ	đ	Ā	ā	š	Ŧ	Ŧ	Ŧ	Ŧ	Ŧ	Ŧ	Ŧ	Ŧ	Ŧ	Ŧ
Gbreve	Gcircumflex	hbar	hcircumflex	gbreve	gcircumflex	Gdotaccent	Gcircumflex	Gdotaccent	Gcircumflex	Ubreve	Scircumflex	Sdotaccent	Scircumflex	Sdotaccent	Scircumflex	Ubreve	Scircumflex	Utilde	Utilde	Tbar	Utilde	Tbar	Utilde	Eng	eng	kgreenlandi
Ġ	Ġ	ġ	ġ	Ġ	Ġ	Ġ	Ġ	Ū	Ū	Ū	Ū	Ū	Ū	Ū	Ū	Ū	Ū	Ū	Ū	Ū	Ū	Ū	Ū	Ū	Ū	Ū
uni1E02	uni1E03	uni1E0A	Wgrave	Wacute	uni1E0B	Ygrave	uni1E1E	uni1E1F	uni1E40	uni1E41	uni1E56	wgrave	uni1E57	wacute	uni1E60	ygrave	Wderesis	wderesis	uni1E61	Wcircumflex	uni1E6A	Wcircumflex	uni1E6B	wcircumflex	Wcedilla	
Ŵ	ŵ	Ŵ	Ŵ	ŵ	Ŵ	Ŵ	Ŵ	Ŵ	Ŵ	Ŵ	Ŵ	Ŵ	Ŵ	Ŵ	Ŵ	Ŵ	Ŵ	Ŵ	Ŵ	Ŵ	Ŵ	Ŵ	Ŵ	Ŵ	Ŵ	Ŵ
g	L	N	n	l	R	r	g	Æ	E	U	G	Œ	Œ	L	N	O	R	S	T	A	B	C	D	E	D	
E.1	F.1	G.1	H.1	L.1	J.1	K.1	L.1	M.1	N.1	O.1	P.1	Q.1	R.1	S.1	T.1	U.1	V.1	W.1	X.1	Y.1	Z.1	A.2	B.2	C.2	D.2	E.2
E	F	G	H	I	J	K	L	M	N	O	P	Q	R	S	T	U	V	W	X	Y	Z	A	B	C	D	E
F.2	G.2	H.2	I.2	J.2	K.2	L.2	M.2	N.2	O.2	P.2	Q.2	R.2	S.2	T.2	U.2	V.2	W.2	X.2	Y.2	Z.2	A.3	B.3	C.3	D.3	E.3	F.3
F	G	H	I	J	K	L	M	N	O	P	Q	R	S	T	U	V	W	X	Y	Z	A	B	C	D	E	F
G.3	H.3	I.3	J.3	K.3	L.3	M.3	N.3	O.3	P.3	Q.3	R.3	S.3	T.3	U.3	V.3	W.3	X.3	Y.3	Z.3	Zscript.end	Zscript	Zstroke	q.1	h.tail	Lstroke	q.stroke
G	H	I	J	K	L	M	N	O	P	Q	R	S	T	U	V	W	X	Y	Z	ſ	ſ	z	ſ	h	l	l
l.stroke	a.angel	b.angel	c.angel	d.angel	e.angel	f.angel	g.angel	h.angel	i.angel	j.angel	k.angel	l.angel	m.angel	n.angel	o.angel	p.angel	q.angel	r.angel	s.angel	t.angel	v.angel	w.angel	x.angel	y.angel	z.angel	
k	a	b	c	d	e	f	g	h	i	j	k	l	m	n	o	p	q	r	s	t	u	v	w	x	y	z
z.001	a.butterfly	b.butterfly	c.butterfly	d.butterfly	e.butterfly	f.butterfly	g.butterfly	h.butterfly	i.butterfly	j.butterfly	k.butterfly	l.butterfly	m.butterfly	n.butterfly	o.butterfly	p.butterfly	q.butterfly	r.butterfly	s.butterfly	t.butterfly	u.butterfly	v.butterfly	w.butterfly	x.butterfly	y.butterfly	z.butterfly
z	a	b	c	d	e	f	g	h	i	j	k	l	m	n	o	p	q	r	s	t	u	v	w	x	y	z
a.charm	b.charm	c.charm	d.charm	e.charm	f.charm	g.charm	h.charm	i.charm	j.charm	k.charm	l.charm	m.charm	n.charm	o.charm	p.charm	q.charm	r.charm	s.charm	t.charm	u.charm	v.charm	w.charm	x.charm	y.charm	z.charm	s.end
a	b	c	d	e	f	g	h	i	j	k	l	m	n	o	p	q	r	s	t	u	v	w	x	y	z	ω
b.ënd	c.ënd	d.ënd	e.ënd	f.ënd	g.ënd	h.ënd	i.ënd	j.ënd	k.ënd	l.ënd	m.ënd	n.ënd	o.ënd	p.ënd	q.ënd	r.ënd	s.ënd	t.wash.ënd	u.ënd	v.ënd	w.ënd	x.ënd	y.ënd	z.ënd	E.2.acute	E.2.grave
b	c	d	e	f	g	h	i	j	k	l	m	n	o	p	q	r	s	t	u	v	w	x	y	z	É	È
E.2.ogonek	E.2.macron	E.2.aron	E.2.breve	E.2.circumflex	E.2.dieresis	E.2.dotaccent	uniFBA0	_433	_434	_435	_564	E.swash	F.swash	G.swash	H.swash	I.swash	J.swash	K.swash	L.swash	M.swash	N.swash	O.swash	P.swash	Q.swash	R.swash	S.swash
É	È	È	È	È	È	È	È	È	È	È	È	È	È	È	È	È	È	È	È	È	È	È	È	È	È	È
T.swash	U.swash	V.swash	W.swash	X.swash	Y.swash	Z.swash	a.swash	b.swash	c.swash	d.swash	e.swash	f.swash	g.swash	h.loop	h.lighdot	h.highdot	k.swash	l.swash	m.swash	n.swash	o.swash	p.swash	q.swash	r.swash	s.swash	t.swash
T	U	V	W	X	Y	Z	a	b	c	d	e	f	g	h	i	j	k	l	m	n	o	p	q	r	s	t
u.swash	v.swash	w.swash	x.swash	y.swash	z.swash	s.t	s.t	s.t	s.t	s.t	s.t	s.t	s.t	s.t	s.t	s.t	s.t	s.t	s.t	s.t	s.t	s.t	s.t	s.t	s.t	s.t
w	r	w	x	y	z	st	u	tt	tt	th	sp	th	ff	ff	ll	ll	ll	ll	ll	ll	ll	ll	ll	ll	ll	ll

- Waterfall Pro
- Waterfall Angel
- Waterfall Butterfly
- Waterfall Charm
- Waterfall Dreams
- Waterfall Ligatures

Waterfall USER'S GUIDE

TrueType Font Package Options

Package Name	Number of fonts	Available Formats	Fonts included in Package
Waterfall Angel	Single Font	Windows/Mac TTF	Waterfall Angel
Waterfall Butterfly	Single Font	Windows/Mac TTF	Waterfall Butterfly
Waterfall Charm	Single Font	Windows/Mac TTF	Waterfall Charm
Waterfall Dreams	Single Font	Windows/Mac TTF	Waterfall Dreams
Waterfall Ligatures	Single Font	Windows/Mac TTF	Waterfall Ligatures
Waterfall AB Pack	3 font package	Windows/Mac TTF	Waterfall Angel Waterfall Butterfly Waterfall Ligatures
Waterfall AC Pack	3 font package	Windows/Mac TTF	Waterfall Angel Waterfall Charm Waterfall Ligatures
Waterfall AD Pack	3 font package	Windows/Mac TTF	Waterfall Angel Waterfall Dreams Waterfall Ligatures
Waterfall Family Pack	5 font package	Windows/Mac TTF	Waterfall Angel Waterfall Butterfly Waterfall Charm Waterfall Dreams Waterfall Ligatures
Waterfall Pro	5 font package	OpenType	Waterfall Pro

If you don't use applications that support OpenType features— NO PROBLEM!

The TrueType Packages of the Waterfall Family contain nearly all the glyphs of the PRO version, allowing you to create comparable designs with the TrueType versions of the font.

Beginning on page 11 of this manual, you will see how the TrueType formats of the family may be used to create beautiful typographic designs. See how substituting the font styles of individual glyphs makes the difference between the TrueType and OpenType designs virtually indistinguishable.



Waterfall Ligatures

Languages Not Supported
Designed to be
used for character
substitution.

Waterfall Ligatures is a limited set of characters to be used as substitute glyphs for characters in the other four TrueType styles. Use this keymap to find alternate characters and ligatures quickly.

A	B	C	D	E	F	G	H	I	J	K	L	M	N	O
P	Q	R	S	T	U	V	W	X	Y	Z	a	b	c	d
e	f	g	h	i	j	k	l	m	n	o	p	q	r	s
t	u	v	w	x	y	z	#	\$	%	&	0	1	2	3
4	5	6	7	8	9	@	Waterfall Ligatures Characters							

- Waterfall Pro
- Waterfall Angel
- Waterfall Butterfly
- Waterfall Charm
- Waterfall Dreams
- Waterfall Ligatures**

Samples Using TrueType Fonts

Alternates and Ligatures add an Element of
Majestic Beauty
&
Elegant Style

Alternates and Ligatures add an Element of
Majestic Beauty
&
Elegant Style

Waterfall USER'S GUIDE



Seen on the MyFonts.com web site. The text in this graphic can be easily created using the TrueType styles of the font family in Adobe® Photoshop™, or the alternates of the Pro version in Adobe® InDesign™.

Waterfall Pro 
Waterfall Angel 
Waterfall Butterfly 
Waterfall Charm 
Waterfall Dreams 
Waterfall Ligatures 

Samples Using TrueType Fonts <cont>

Elegant
Creations



Also on the MyFonts.com web site. The text in this graphic can be easily created using the TrueType styles of the font family in Adobe® Photoshop™. Or the alternates of the Pro version in Adobe® InDesign™.

Elegant
Creations

- Waterfall Pro
- Waterfall Angel
- Waterfall Butterfly
- Waterfall Charm
- Waterfall Dreams
- Waterfall Ligatures

OpenType Features

By using the Stylistic Sets and alternate characters of the Pro version, glyphs of the entire family can be easily accessed from the OpenType Pro font. As highlighted on page 4, the color codes show the glyphs that may be found in the TrueType styles.

WaterfallPro 48 pt (OpenType with all features turned OFF)

The quick brown fox jumped
over the lazy spotted dog.

WaterfallPro 48 pt (OpenType Stylistic Set 1 feature turned ON)

The quick brown fox jumped
over the lazy spotted dog.

WaterfallPro 48 pt (OpenType Stylistic Set 2 feature turned ON)

The quick brown fox jumped
over the lazy spotted dog.

WaterfallPro 48 pt (OpenType Stylistic Set 3 feature turned ON)

The quick brown fox jumped
over the lazy spotted dog.

Waterfall USER'S GUIDE

WaterfallPro 48 pt (OpenType Stylistic Set 4 feature turned ON)

The quick brown fox jumped
over the lazy spotted dog.

Alternates & Ligatures (also available in Waterfall Ligatures)

b h p æ œ fi fl ffi ffl ll ll
th pp tt ft yp st tt sp

Waterfall Pro	Black
Waterfall Angel	Green
Waterfall Butterfly	Blue
Waterfall Charm	Red
Waterfall Dreams	Purple
Waterfall Ligatures	Yellow-Green

Substituting Styles

Using the characters from the TrueType styles, you can approximate the look of the Pro version features by substituting font styles of individual characters from the single fonts. The OpenType Pro version (shown in black) gives added versatility with the use of ligatures, and alternates.

Waterfall Family (TrueType styles)

The quick brown fox jumped
over the lazy spotted dog.

WaterfallPro (with OpenType features)

The quick brown fox jumped
over the lazy spotted dog.



Using Waterfall AB

With a Font Package, display text can be enhanced by substituting individual characters.

Waterfall Angel with no character substitutions

*Here's wishing you and yours
a very Merry Christmas
and a Blessed
and Prosperous New Year.*

Waterfall AB Pack
Waterfall Angel
Waterfall Butterfly
Waterfall Ligatures

Waterfall AB Pack (with Waterfall Angel, Butterfly and Ligatures substituted)

*Here's wishing you and yours
a very Merry Christmas
and a Blessed
and Prosperous New Year.*



Using Waterfall AC

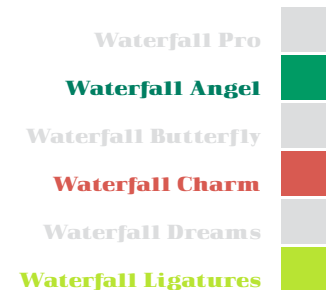
With a Font Package, display text can be enhanced by substituting individual characters.

Waterfall Angel with no substitutions

*Here's wishing you and yours
a very Merry Christmas
and a Blessed
and Prosperous New Year.*

Waterfall AC Pack (Waterfall Angel, Charm and Ligatures)

*Here's wishing you and yours
a very Merry Christmas
and a Blessed
and Prosperous New Year.*



Using Waterfall AD

With a Font Package, display text can be enhanced by substituting individual characters.

Waterfall Angel with no substitutions

*Here's wishing you and yours
a very Merry Christmas
and a Blessed
and Prosperous New Year.*

Waterfall AC Pack (Waterfall Angel, Dreams and Ligatures)

*Here's wishing you and yours
a very Merry Christmas
and a Blessed
and Prosperous New Year.*



Using Waterfall Family

With a Font Package, display text can be enhanced by substituting individual characters.

Waterfall Angel with no substitutions

*Here's wishing you and yours
a very Merry Christmas
and a Blessed
and Prosperous New Year.*

Waterfall Family Pack (Waterfall Angel, Butterfly, Charm, Dreams and Ligatures)

*Here's wishing you and yours
a very Merry Christmas
and a Blessed
and Prosperous New Year.*



Which is the OpenType?

Let's play a game. Can you tell which of these two phrases is OpenType and which is a combination of single fonts? Hint: Look for the ligatures. (Answer on the following page.)

Happy Birthday to You!

Happy Birthday to You!

- Waterfall Pro 
- Waterfall Angel 
- Waterfall Butterfly 
- Waterfall Charm 
- Waterfall Dreams 
- Waterfall Ligatures 

Answer!

The top line is the OpenType Pro version and the bottom is a combination of the other single font styles. Did you guess correctly?

Happy Birthday to You!

Happy Birthday to You!

- Waterfall Pro
- Waterfall Angel
- Waterfall Butterfly
- Waterfall Charm
- Waterfall Dreams
- Waterfall Ligatures

Thank You!

Thanks for taking the time to look over this simple guide. Hopefully, it has provided a better understanding of how Waterfall works in its various formats.

If you have any questions or comments, please don't hesitate to contact Rob Leuschke at typesetit@charter.net.

Fonts used in this Guide

ITC Arid
Leuschke Black (beta version)
Leuschke Regular (beta version)
Gideon Roman
Italianno
Myriad Pro
Waterfall Angel
Waterfall Butterfly
Waterfall Charm
Waterfall Dreams
Waterfall Ligatures
Waterfall Pro

The Waterfall Family was designed by Rob Leuschke. Font glyphs edited with Fontographer® 5.0. Open-Type programming and font generation completed with FontLab® 5.0.4.

This document was created with Adobe® InDesign™ on a Macintosh® PowerBook™.
©2011 Robert E. Leuschke All Rights Reserved.

TYPE *Set* IT LLC
114 Long and Winding Road
St. Peters, MO 63376 USA
www.typesetit.com